

Reservdelar²

Premiumverktyg - Axlar

Selected by Rydahls

Vi säljer produkter i världsklass,
noggrant utvalda av oss själva!

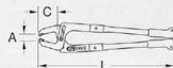


450.0210

PREMIUM-WERKZEUGE
KSTOOLS
PREMIUM TOOLS

Grease cap pliers

- Hard rubber handle
- For the damage free drawing off of grease caps
- 2x6 moveable adjustable steps
- Wedge shaped jaw profile
- Head burnished
- Special tool steel



A mm	C mm	L mm
0-100	85	500

450.0180

PREMIUM-WERKZEUGE
KSTOOLS
PREMIUM TOOLS

Vario nut and cap key set

- For the dismantling and assembly of vario nuts
- Suitable for exact torque with a 3/4" square drive
- Certain stop through clamping screws and adapter guides on the basic device
- Hole separation maximum 145 mm
- Slim design
- Suitable for narrow spaces
- Ideally suited for special nuts and caps
- Special tool steel

Application range: 6 point-, 8 point-, nuts- and round nuts



13
pcs

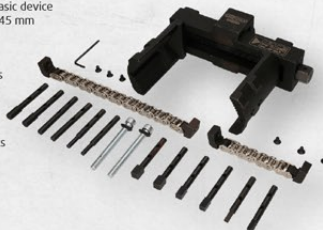
450.0190

PREMIUM-WERKZEUGE
KSTOOLS
PREMIUM TOOLS

Vario nut and cap key set, heavy duty

- Extra heavy execution
- For the dismantling and assembly of vario nuts
- Suitable for exact torque with a 3/4" square drive
- Certain stop through clamping screws and adapter guides on the basic device
- Hole separation maximum 145 mm
- Includes clamping chain
- Slim design
- Suitable for narrow spaces
- Ideally suited for special nuts and caps
- Special tool steel

Application range: 6 point-, 8 point-, Nuts- and round nuts



14
pcs

450.0241

PREMIUM-WERKZEUGE
KSTOOLS
PREMIUM TOOLS

Wheel cap and axle nut socket

- Internal square drive to DIN 3121 / ISO 1174
- 8-point
- Positive drive of the axle nut
- Any extensive slipping is avoided
- Milled out profile
- Sturdy design
- Can be used with an impact wrench or torque wrench
- Special tool steel

Application range:
e.g. Volvo axle nut / dust grease caps
FM and FH VA (450Nm)

3/4"

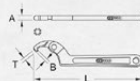


mm	D mm	T mm	H mm
115	138	45	80



Hook wrench with nose

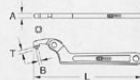
- In accordance to DIN 1810 Form A
- With flexible head
- With hanging hole
- For slotted nuts
- Matt finish
- Chrome vanadium



KSTOOLS	mm	mm	A mm	B mm	L mm	T mm
517.1302	19-50	3/4-2"	9	3,5	162	2,9
517.1303	32-76	1.1/4-3"	11,5	4,5	205	3,7
517.1304	50-120	2-4.3/4"	12,4	6,5	295	4,6
517.1305	114-158	4.1/2-6.1/4"	12,4	9,8	315	8,3

Flexible hook wrench with pin

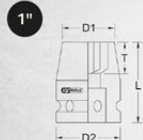
- In accordance to DIN 1810 Form B
- With flexible head
- With hanging hole
- For pin type round nuts
- Matt finish
- Chrome vanadium



KSTOOLS	mm	mm	A mm	B mm	L mm	T mm
517.1312	17 - 37	170	9,2	4	165	4
517.1313	28 - 41	170	11,3	5	210	4,7
517.1314	37 - 50	170	12,5	6	295	5,5
517.1315	47 - 60	170	12,6	8	320	7,6

Hexagon impact socket

- 6 point
- According to DIN 3129 / ISO 2725-2
- Internal square drive to DIN 3121 / ISO 1174
- Short execution
- For machinery usage
- Phosphate finish
- Chrome molybdenum



KSTOOLS PREMIUM TOOL-5	mm	mm	L mm	D2 mm	D1 mm	T mm
515.1750	50,0		74,0	54,0	74,0	26,0
515.1755	55,0		85,0	54,0	81,0	28,0
515.1760	60,0		89,0	54,0	87,0	31,0
515.1765	65,0		93,0	54,0	93,0	32,0

KSTOOLS PREMIUM TOOL-5	mm	mm	L mm	D2 mm	D1 mm	T mm
515.1770	70,0		98,0	54,0	99,0	35,0
515.1775	75,0		100,0	86,0	106,0	40,0
515.1780	80,0		100,0	86,0	112,0	47,0
515.1785	85,0		102,0	86,0	119,0	47,0
515.1790	90,0		107,0	86,0	124,0	47,0
515.1795	95,0		107,0	86,0	131,0	50,0
515.1891		1"	58,0	51,0	42,0	14,0
515.1892		1.1/4"	60,0	51,0	51,0	16,0
515.1893		1.7/16"	62,0	52,0	56,0	20,0
515.1894		1.1/2"	62,0	52,0	58,0	22,0
515.1895		1.5/8"	62,0	52,0	62,0	22,0
515.1896		1.13/16"	64,0	58,0	68,0	23,0
515.1897		1.7/8"	66,0	58,0	70,0	24,0
515.1898		2.1/4"	75,0	62,0	84,0	30,0

Axle nut wrench, long

- Internal square
- 8-point
- High accuracy of fit
- Extremely robust version
- Suitable for high tightening and loosening torque
- Special tool steel

3/4"


KSTOOLS PREMIUM TOOL-5	mm	L mm
460.5323	80	162
460.5327	100	205
460.5330	115	295

Axle nut socket, short

- Internal square drive to DIN 3121 / ISO 1174
- 6 point
- High accuracy of fit
- Extremely robust version
- Suitable for high tightening and loosening torque
- Special tool steel

3/4"


KSTOOLS PREMIUM TOOL-5	mm	D mm	H mm	T mm
460.0050	70	95,0	70,0	40,0
460.0055	75	98,0	70,0	40,0
460.0060	80	104,0	70,0	40,0
460.0065	85	112,0	70,0	40,0
460.0070	90	116,0	70,0	40,0
460.0075	95	122,0	70,0	40,0
460.0080	100	128,0	71,0	40,0

460.0085	105	140,0	71,0	40,0
460.0090	110	147,0	71,0	40,0
460.0095	115	153,0	71,0	40,0
460.0105	120	157,0	71,0	40,0
460.0110	125	165,0	71,0	40,0
460.0115	130	170,0	71,0	40,0
460.0120	135	175,0	71,0	40,0
460.0125	140	180,0	71,0	40,0
460.0130	145	187,0	71,0	40,0
460.0135	150	195,0	71,0	40,0
460.0140	155	203,0	71,0	40,0
460.0145	160	210,0	71,0	40,0
460.0150	165	215,0	71,0	40,0
460.0155	170	220,0	71,0	40,0
460.0160	175	225,0	71,0	40,0
460.0165	180	230,0	71,0	40,0
460.0170	185	235,0	71,0	40,0
460.0175	190	243,0	71,0	40,0
460.0180	195	247,0	71,0	40,0
460.0185	200	254,0	71,0	40,0

Axle nut socket, short

- Internal square drive to DIN 3121 / ISO 1174
- 8-point
- High accuracy of fit
- Extremely robust version
- Suitable for high tightening and loosening torque
- For machinery usage
- Special tool steel



KSTOOLS PREMIUM TOOLS	mm	D mm	H mm	T mm
460.3415	70	77,0	90,0	40,0
460.3420	75	77,0	95,0	40,0
460.3425	80	81,0	103,0	40,0
460.3430	85	72,5	104,0	40,0
460.3435	90	84,0	112,0	40,0
460.3440	95	84,0	114,0	40,0
460.3310	100	77,0	127,0	40,0
460.3315	105	84,0	127,0	40,0

460.3320	110	77,0	137,0	40,0
460.3325	115	77,0	143,0	40,0
460.3330	120	77,0	143,0	40,0
460.3335	125	77,0	153,0	40,0
460.3340	130	77,0	158,0	40,0
460.3345	135	77,0	162,0	40,0
460.3350	140	84,0	167,0	40,0
460.3355	145	84,0	172,0	40,0
460.3360	150	84,0	178,0	40,0
460.3365	155	84,0	183,0	40,0
460.3370	160	84,0	190,0	40,0
460.3375	165	84,0	194,0	40,0
460.3380	170	84,0	200,0	40,0
460.3385	175	84,0	205,0	40,0
460.3390	180	88,0	212,0	40,0
460.3395	185	84,0	216,0	40,0
460.3400	190	84,0	221,0	40,0
460.3405	195	84,0	227,0	40,0
460.3410	200	81,0	230,0	40,0

Axle nut socket with guide band

- Internal square drive to DIN 3121 / ISO 1174
- 12 point
- Any extensive slipping is avoided
- Extremely robust version
- Suitable for high tightening and loosening torque
- Can be used with an impact wrench or torque wrench
- Special tool steel



KSTOOLS PREMIUM TOOLS	mm	H mm	Ø mm
460.4220	80	90,0	107,0
460.4225	85	90,0	114,0
460.4230	90	90,0	119,0
460.4235	95	90,0	125,0
460.4240	100	90,0	131,0
460.4245	105	90,0	137,0
460.4250	110	90,0	142,0
460.4255	115	90,0	148,0
460.4260	120	90,0	154,0

Axle nut wrench, long

- Internal square drive to DIN 3121 / ISO 1174
- 6 point
- High accuracy of fit
- Extremely robust version
- Suitable for high tightening and loosening torque
- Special tool steel



KSTOOLS PREMIUM TOOLS	mm	D mm	H mm	T mm
460.0005	30	45,0	90,0	40,0
460.0010	32	48,0	90,0	40,0
460.0015	33	49,0	90,0	40,0
460.0020	34	50,0	90,0	40,0
460.0025	35	51,0	90,0	40,0
460.0030	36	53,0	90,0	40,0
460.0035	38	55,0	90,0	40,0
460.0040	41	59,0	90,0	40,0
460.0045	46	64,0	90,0	40,0

Axle nut socket, short

- Internal square drive to DIN 3121 / ISO 1174
- 8-point
- High accuracy of fit
- Extremely robust version
- Suitable for high tightening and loosening torque
- For machinery usage
- Special tool steel

3/4"


	mm	H mm	D mm	T mm
460.2755	70	77,0	90,0	40,0
460.2760	75	77,0	95,0	40,0
460.2765	80	73,0	99,0	40,0
460.2770	85	73,0	104,0	40,0
460.2775	90	77,0	112,0	40,0
460.2780	95	73,0	115,0	40,0
460.2650	100	77,0	127,0	40,0
460.2655	105	77,0	132,0	40,0

460.2660	110	73,0	141,0	40,0
460.2665	115	73,0	146,0	40,0
460.2670	120	73,0	143,0	40,0
460.2675	125	77,0	153,0	40,0
460.2680	130	77,0	158,0	40,0
460.2685	135	73,0	168,0	40,0
460.2690	140	73,0	173,0	40,0
460.2695	145	73,0	178,0	40,0
460.2700	150	73,0	184,0	40,0
460.2705	155	73,0	189,0	40,0
460.2710	160	73,0	194,0	40,0
460.2715	165	73,0	199,0	40,0
460.2720	170	73,0	205,0	40,0
460.2725	175	73,0	210,0	40,0
460.2730	180	73,0	215,0	40,0
460.2735	185	73,0	221,0	40,0
460.2740	190	73,0	226,0	40,0
460.2745	195	73,0	232,0	40,0
460.2750	200	73,0	237,0	40,0

Axle nut socket, short

- Internal square drive to DIN 3121 / ISO 1174
- 6-point
- High accuracy of fit
- Extremely robust version
- Suitable for high tightening and loosening torque
- Special tool steel

1"


	mm	D mm	H mm	T mm
460.0205	70	95,0	71,0	40,0
460.0215	75	98,0	71,0	40,0
460.0220	80	104,0	71,0	40,0
460.0225	85	111,0	71,0	40,0
460.0230	90	116,0	71,0	40,0
460.0235	95	122,0	71,0	40,0
460.0240	100	137,0	71,0	40,0
460.0245	105	142,0	71,0	40,0
460.0250	110	148,0	71,0	40,0

460.0255	115	154,0	71,0	41,0
460.0260	120	158,0	71,0	41,0
460.0265	125	165,0	71,0	41,0
460.0270	130	170,0	71,0	41,0
460.0275	135	175,0	71,0	41,0
460.0280	140	180,0	71,0	40,0
460.0285	145	178,0	71,0	40,0
460.0290	150	195,0	71,0	41,0
460.0295	155	200,0	71,0	41,0
460.0305	160	210,0	71,0	41,0
460.0310	165	200,0	71,0	41,0
460.0315	170	220,0	71,0	41,0
460.0320	175	225,0	71,0	41,0
460.0325	180	230,0	71,0	41,0
460.0330	185	238,0	71,0	41,0
460.0335	190	245,0	71,0	41,0
460.0340	195	250,0	71,0	41,0
460.0345	200	255,0	71,0	41,0

460.4190

PREMIUM-WERKZEUGE
KS TOOLS
PREMIUM TOOLS

Axle nut socket for DAF

- Internal square drive to DIN 3121 / ISO 1174
- 6 point
- Any extensive slipping is avoided
- Extremely robust version
- Suitable for high tightening and loosening torque
- Can be used with an impact wrench or torque wrench
- Chrome molybdenum

Application range: DAF (CF) EURO 5 drive axle nut

3/4"



mm	D mm	H mm
120,0	158,0	106,0

460.3730

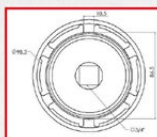
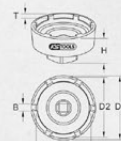
PREMIUM-WERKZEUGE
KS TOOLS
PREMIUM TOOLS

Wrench with 6 pins for DAF

- Internal square drive to DIN 3121 / ISO 1174
- High accuracy of fit
- Special profile with 6 internal studs
- Extremely robust version
- Suitable for high tightening and loosening torque
- Special tool steel

Application range: DAF LF45 rear axle

3/4"



D1 mm	D2 mm	D3 mm	B mm	Studs	T mm	H mm
109,0	98,0	86,0	10,5	6	20,0	87,0

460.1085

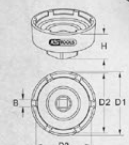
PREMIUM-WERKZEUGE
KS TOOLS
PREMIUM TOOLS

Wrench with 6 pins for DAF

- Internal square drive to DIN 3121 / ISO 1174
- High accuracy of fit
- Special profile with 6 internal studs
- Extremely robust version
- Suitable for high tightening and loosening torque
- Special tool steel

Application range: DAF CF85 transmission (EURO 4 and EURO 5)

3/4"



D2 mm	D1 mm	H mm	D3 mm	Studs
74,0	91,0	55,0	66,0	6

460.4450

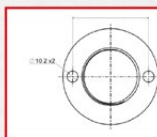
PREMIUM-WERKZEUGE
KS TOOLS
PREMIUM TOOLS

Axle nut wrench with 2 pins for Fuso

- Internal square drive to DIN 3121 / ISO 1174
- with 2 external pins, Ø 9.5 mm
- High accuracy of fit
- Extremely robust version
- Suitable for high tightening and loosening torque
- Special tool steel

Application range: IsuzuFuso Canter 3.5 tons

1/2"



Ø mm	Studs	L mm	Inner stud Ø mm
86	2	68,0	9,5

460.4295



Axle nut wrench with 2 pins for Fuso

- Internal square drive to DIN 3121 / ISO 1174
- with 2 external pins, Ø 9.5 mm
- High accuracy of fit
- Extremely robust version
- Suitable for high tightening and loosening torque
- Special tool steel

Application range: Fuso Canter 3.5 tons, Isuzu 7.5 tons

1/2"



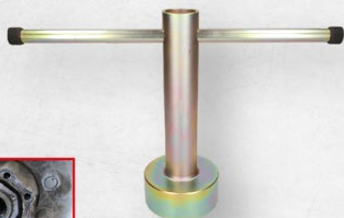
Ø mm	Studs	L mm	Inner stud Ø mm
100	2	68,0	9,5

460.4385



Axle nut wrench for Fuso rear axle

- quick-action pin drive
- 8-point
- Extra long execution
- High accuracy of fit
- Extremely robust version
- Suitable for high tightening and loosening torque
- Special tool steel



Ø mm	Ø mm	H mm
120	142	360,0

450.0230



Axle nut wrench for HINO

- For the dismantling and assembly of HINO axle nuts
- For 11.9 t axles
- 8-point
- Extremely versatile
- Suitable for exact torque with a 3/4" square drive
- For machinery usage
- Special tool steel

3/4"



	mm	Ø mm	H mm
3/4"	105,0	125,0	85,0

460.4170



Axle nut impact socket for Iveco

- Internal square drive to DIN 3121 / ISO 1174
- 12 point
- Any extensive slipping is avoided
- Extremely robust version
- Suitable for high tightening and loosening torque
- Can be used with an impact wrench or torque wrench
- Special tool steel

1"



mm	Ø mm	H mm
85,0	83,0	58,0

460.5333



Axle nut wrench for Iveco

- Internal square drive to DIN 3121 / ISO 1174
- 6 point
- High accuracy of fit
- Extremely robust version
- Suitable for high tightening and loosening torque
- Special tool steel

Application range: Iveco Euro Cargo HA

3/4"



mm	Ø mm	H mm
90,0	117,0	69,0

460.1040

KS TOOLS
PREMIUM TOOLS

Axle nut wrench for Iveco

- Six sided drive 36 mm
- 6 point
- Any extensive slipping is avoided
- Extremely robust version
- Suitable for high tightening and loosening torque
- Can be used with an impact wrench or torque wrench
- Special tool steel

Application range: Iveco Euro Cargo



mm	mm	Ø mm	H mm
98,0	36	122,0	115,0

450.0203

KS TOOLS
PREMIUM TOOLS

Axle nut wrench for Iveco with guide collar

- Six sided drive 36 mm
- Positive drive of the axle nut
- Any extensive slipping is avoided
- Milled out profile
- Sturdy design
- Can be used with an impact wrench or torque wrench
- Special tool steel

Application range: Iveco Eurotech Cursor HA etc.



mm	mm	Ø mm	H mm
110,0	36	133,0	116,0

450.0200

KS TOOLS
PREMIUM TOOLS

Axle nut wrench for Iveco

- Six sided drive 36 mm
- Positive drive of the axle nut
- Any extensive slipping is avoided
- Milled out profile
- Sturdy design
- Can be used with an impact wrench or torque wrench
- Special tool steel

Application range: Iveco Euro Cargo etc.



mm	mm	Ø mm	H mm
98,0	36	122,0	120,0

460.5340

KS TOOLS
PREMIUM TOOLS

Grooved nut spanner set with guide tube for MAN

- Internal square drive to DIN 3121 / ISO 1174
- including threaded guide tube
- High accuracy of fit
- Extremely robust version
- Suitable for high tightening and loosening torque
- Special tool steel

Application range: MAN planetary hub rear axles (5MR, 3MR) and front axle (M series: 3ME DI)

3/4"



2 pcs

460.4165

KS TOOLS
PREMIUM TOOLS

Axle nut socket for Iveco

- Six sided drive 36 mm
- 12 point
- Any extensive slipping is avoided
- Extremely robust version
- Suitable for high tightening and loosening torque
- Can be used with an impact wrench or torque wrench
- Special tool steel

Application range: Axle nut Iveco Eurotech-Cursor



mm	mm	Ø mm	H mm
105,0	36	128,0	116,0

460.5350

KS TOOLS
PREMIUM TOOLS

Grooved nut spanner set with guide tube for MAN

- Internal square drive to DIN 3121 / ISO 1174
- Screw-in guide tube
- High accuracy of fit
- Extremely robust version
- Suitable for high tightening and loosening torque
- Special tool steel

Application range: Mercedes and MAN, Atego, bus and transporter with grooved nut (A9763560026).
The guide tube is not required for the following vehicles: MAN trucks (type H, L, M, N and T) and bus (type A, J, P and R) with grooved nut (81.90620-0086)

3/4"



2 pcs

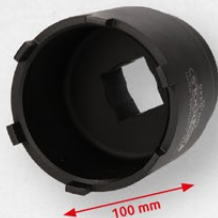
460.5345



Wrench with 6 pins for MAN

- Internal square drive to DIN 3121 / ISO 1174
- High accuracy of fit
- Extremely robust version
- Suitable for high tightening and loosening torque
- Special tool steel

Application range: MAN VW2-VW4-VW6.1-6.8



1"

Inner-Ø mm	Outer-Ø mm	H mm	Studs	Stud width mm
77	84	100	6	10

460.5355



Grooved nut spanner set with guide tube for MAN

- Internal square drive to DIN 3121 / ISO 1174
- Including threaded guide tube
- High accuracy of fit
- Extremely robust version
- Suitable for high tightening and loosening torque
- Special tool steel

Application range: MAN Hypoid rear axles M-series (16M-Soma axle, HY-0855, HY-0955, HY-1175)



3/4"

2 pcs

450.0160



Wrench with 6 pins for MAN and Mercedes

- Internal square drive to DIN 3121 / ISO 1174
- Rigid locating tube
- Optional with expander sleeve (bayonet locking system)
- High accuracy of fit
- Extremely robust version
- Suitable for high tightening and loosening torque
- Special tool steel

Application range: Mercedes Atego Rear axle, Vitaro 814, MAN etc.



3/4"

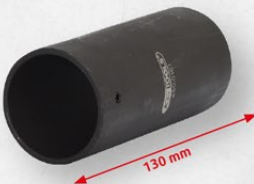
Inner-Ø mm	Outer-Ø mm	Locating tube Ø mm	Inner stud Ø mm	Studs	Stud width mm
80	95	49	87	6	10

450.0161



Expander sleeve for location tube

- Practical connector system with bayonet clasp
- Suitable for groove nut spanner 450.0160
- Enables stable work position
- Prevents slippage of the socket
- Extremely robust version
- Switched by turning the bayonet clasp
- Special tool steel



Inner-Ø mm	Outer-Ø mm	L mm
49	57	130

450.0168



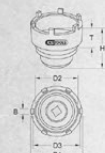
Wrench with 6 pins for MAN and Mercedes

- Internal square drive to DIN 3121 / ISO 1174
- Optional with sleeve locating tube
- High accuracy of fit
- Extremely robust version
- Suitable for high tightening and loosening torque
- Special tool steel

Application range: Mercedes and MAN 10 + 13 t Reduction axle, Hypoid- and Trailer axle NR 7/4, Omnibus 0305 G + 0405 G etc.



3/4"

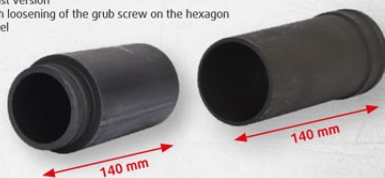


D1 mm	D2 mm	H mm	D3 mm	Studs	B mm
95	115	111	101	6	6

Locating tube for groove nut sockets

- Practical connector system with fixing screw
- Usable for different groove socket nuts (module systems)
- Enables stable work position
- Prevents slippage of the socket
- Extremely robust version
- Change through loosening of the grub screw on the hexagon
- Special tool steel

3/4"



	Inner-Ø mm	Outer-Ø mm	L mm
450.0150	46	52	140
450.0152	60	67	140

450.0169

KS TOOLS
PREMIUM TOOLS

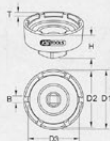
Wrench with 6 pins for Mercedes and MAN

- Internal square drive to DIN 3121 / ISO 1174
- Extremely versatile
- Suitable for exact torque
- Special profile with 6 internal studs
- Suitable for high tightening and loosening torque
- Special tool steel

Application range: Mercedes + MAN drive axle

3/4"

B mm	D1 mm	D2 mm	D3 mm	Studs	T mm	H mm
11,5	119	110	110,5	6	11,6	80



450.0170

KS TOOLS
PREMIUM TOOLS

Wrench with 6 pins for MAN

- Internal square drive to DIN 3121 / ISO 1174
- Six point size 60 mm
- High accuracy of fit
- Extremely robust version
- Suitable for high tightening and loosening torque
- Special tool steel

Application range: MAN TGA Front axle, V9-82L-01(Disk brake/ABS) etc.

3/4"



Inner-Ø mm	Outer-Ø mm	H mm	Inner stud Ø mm	Studs	Stud width mm
101	110	80	93	6	8

450.0175

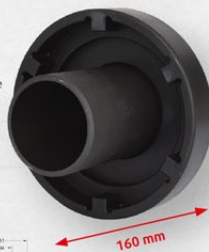
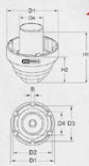
KS TOOLS
PREMIUM TOOLS

MAN TGA groove nut spanner with locating tube

- Internal square drive to DIN 3121 / ISO 1174
- Six point size 60 mm
- High accuracy of fit
- Extremely robust version
- Optional with locating tube
- Suitable for high tightening and loosening torque
- Special tool steel

Application range: MAN TGA rear axle, HY-1350 (Hypoid)

3/4"



Ø mm	H2 mm	H1 mm	D1 mm	D2 mm	D3 mm	Studs	B mm
60	160	98	148	133	117	6	11,5

460.5360

KS TOOLS
PREMIUM TOOLS

Grooved nut spanner set with 2 guide tubes for MAN

- Internal square drive to DIN 3121 / ISO 1174
- including threaded guide tubes
- High accuracy of fit
- Extremely robust version
- Suitable for high tightening and loosening torque
- Special tool steel

Application range: MAN with guide tube Ø 66.5 mm : Hypoid rear axles F-series (HY-1175, HDY-1175, HY-13110, HY-1180). With guide tube Ø 51.5 mm: Rear hub axles F-series (H7, HD7) and front axles F-series

3/4"



3
pcs

450.0176

KS TOOLS
PREMIUM TOOLS

Slotted nut wrench without guide tube for MAN TGA

- Internal square drive to DIN 3121 / ISO 1174
- Six point size 60 mm
- High accuracy of fit
- Extremely robust version
- With fixed locating tube
- Suitable for high tightening and loosening torque
- Special tool steel

Application range: MAN TGA rear axle, HY-1350 (Hypoid)

3/4"



D2 mm	D1 mm	H1 mm	D3 mm	Studs	B mm
133	148	110	117	6	11

450.0155
KSTOOLS
 PREMIUM WERKZEUGE
 PREMIUM TOOLS

Extension tube for MAN

- For the removal and installation of wheel hubs
- Extension tube for the protection of the wheel bearing and threaded bolts
- With knurling and bore for toggle lever
- Special tool steel

Application range: MAN TGA rear axle e.g. HY 1350


for threads	Inner-Ø mm	Outer-Ø mm	L mm
M100 x 1,5	96	105	360

Extension tube for Mercedes and MAN

- With hexagon drive SW 41
- For the removal and installation of wheel hubs
- For the protection of the wheel bearing and threaded bolts
- Suitable for right and left handed threads
- Special tool steel


Application range:

- Right handed thread = rear axle HL2 e.g. MAN L serie
- Left handed thread = Mercedes Atego/Vario

for threads	for threads	mm	Inner-Ø mm	Outer-Ø mm	L mm
450.0156	M75 x 1,5	41	60	78	180
450.0157	M75 x 1,5L	41	60	78	180

460.1035
KSTOOLS
 PREMIUM WERKZEUGE
 PREMIUM TOOLS

Axle nut socket for Mercedes

- Six sided drive 36 mm
- 6 point
- Any extensive slipping is avoided
- Extremely robust version
- Suitable for high tightening and loosening torque
- Can be used with an impact wrench or torque wrench
- Special tool steel

Application range: Mercedes axle trailers etc.


mm	mm	Ø mm	H mm
95	36	118	158

460.0965
KSTOOLS
 PREMIUM WERKZEUGE
 PREMIUM TOOLS

Axle nut socket for Mercedes

- Six sided drive 36 mm
- 12 point
- Any extensive slipping is avoided
- Extremely robust version
- Suitable for high tightening and loosening torque
- Can be used with an impact wrench or torque wrench
- Special tool steel

Application range: Mercedes axle trailers etc.


3/4"

mm	mm	Ø mm	H mm
95	36	126	157

460.5615
KSTOOLS
 PREMIUM WERKZEUGE
 PREMIUM TOOLS

Axle nut wrench for Mercedes

- Internal square drive to DIN 3121 / ISO 1174
- 6-round profile
- High accuracy of fit
- Extremely robust version
- Suitable for high tightening and loosening torque
- Special tool steel

Application range: Mercedes Truck- VA- and Discos Trailer (05.2000) with compact storage HUB Unit


3/4"



mm	Ø mm	H mm
95	118	75

460.5370
KSTOOLS
 PREMIUM WERKZEUGE
 PREMIUM TOOLS

T-nuts and wrench set with 4 guide tubes for Mercedes

- Internal square drive to DIN 3121 / ISO 1174
- Including threaded guide tubes
- High accuracy of fit
- Extremely robust version
- Suitable for high tightening and loosening torque
- Special tool steel

Application range: Mercedes Hypoid rear axles HL2/2, HL2/3, HL2/5, HL2/9, HL2/11, HL2/12, HL2/15, HL0/3, HL0/6, HL0/7, HL1/2 (only Ø 63 mm required), HL1/3, HL1/8, HL1/9, HL2/30C

 5
pcs

3/4"

460.5620



Grooved nut spanner set with 3 guide tubes for Mercedes

- Internal square drive to DIN 3121 / ISO 1174
- Including threaded guide tubes
- High accuracy of fit
- Extremely robust version
- Suitable for high tightening and loosening torque
- Special tool steel

3/4"

Application range:
Mercedes Hypoid rear axles HL2/2, HL2/3, HL2/5, HL2/9, HL2/11, HL2/12, HL2/15



4
pcs

460.5625



Grooved nut spanner set with guide tube for Mercedes

- Internal square drive to DIN 3121 / ISO 1174
- Including threaded guide tube
- High accuracy of fit
- Extremely robust version
- Suitable for high tightening and loosening torque
- Special tool steel

Application range: Mercedes Hypoid rear axles HL0/3, HL0/6, HL0/7, HL1/2 (only Ø 63 mm necessary), HL1/3, HL1/8, HL1/9, HL2/30C

3/4"



2
pcs

460.5635



Grooved nut spanner set with 3 guide tubes for Mercedes

- Internal square drive to DIN 3121 / ISO 1174
- Including threaded guide tubes
- High accuracy of fit
- Extremely robust version
- Suitable for high tightening and loosening torque
- Special tool steel

3/4"



4
pcs

460.5380



Grooved nut spanner set with guide tube for Mercedes

- Internal square drive to DIN 3121 / ISO 1174
- Including threaded guide tube
- High accuracy of fit
- Extremely robust version
- Suitable for high tightening and loosening torque
- Special tool steel

Application range: Mercedes Hypoid rear axles HL2/2, HL2/7, HL2/13

3/4"



2
pcs

Application range:
Mercedes Hypoid rear axles HL2/14, KL2/16, KL4/1, HL4/16, HL4/17, HL4/23, HL4/28, HL4/29, HL4/30, HL4/4, HL4/8, HD4/6G, HD4/2, HD4/18, NR4/4

460.5630



Grooved nut spanner set with guide tube for Mercedes

- Internal square drive to DIN 3121 / ISO 1174
- Including threaded guide tube
- High accuracy of fit
- Extremely robust version
- Suitable for high tightening and loosening torque
- Special tool steel

Application range: Mercedes Palloid front axles AL3/1, AL3/2, AL3/4, AL3/7, AL3/8

3/4"



2
pcs

460.5385



T-nuts and wrench set with 4 guide tubes for Mercedes

- Internal square drive to DIN 3121 / ISO 1174
- Including threaded guide tubes
- High accuracy of fit
- Extremely robust version
- Suitable for high tightening and loosening torque
- Special tool steel

Application range: Mercedes Hypoid rear axles HL2/14, KL2/16, KL4/1, HL4/16, HL4/17, HL4/23, HL4/28, HL4/29, HL4/30, HL4/4, HL4/8, HD4/6G, HD4/2, HD4/18, NR4/4 and palloid front axles AL3/1, AL3/2, AL3/4, AL3/7, AL3/8

3/4"



5
pcs

460.5395



Grooved nut spanner set with guide tube for Mercedes

- Internal square drive to DIN 3121 / ISO 1174
- Including threaded guide tube
- High accuracy of fit
- Extremely robust version
- Suitable for high tightening and loosening torque
- Special tool steel

Application range: Mercedes hypoid axles HD4/10, HD4/100L, HD4/110L, HD5/3, HD5/4, HD5/8, HD4/21G, HD4/26, HD4/22, HD5/3, HL5/2, HL5/6

3/4"

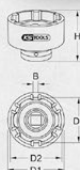


2
pcs

460.1075

Wrench with 6 pins for Mercedes

- Internal square drive to DIN 3121 / ISO 1174
- High accuracy of fit
- Extremely robust version
- Suitable for high tightening and loosening torque
- Special tool steel

1"


D1 mm	D2 mm	D3 mm	H mm	Studs	B mm
110	96	86	82	6	11

460.3790

Grooved nut wrench with 6 pins with guide tube for Mercedes trailer axles

- Internal square drive to DIN 3121 / ISO 1174
- Rigid locating tube
- High accuracy of fit
- Extremely robust version
- Suitable for high tightening and loosening torque
- Special tool steel

Application range: Mercedes trailer axle TZ5/2

3/4"

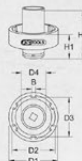

D1 mm	D2 mm	D3 mm	D4 mm	H1 mm	H2 mm	Studs	B mm
100	82	92	47	142	230	6	9,8

460.1070

Groove nut wrench with 6 pins with guide tube for Mercedes

- Internal square drive to DIN 3121 / ISO 1174
- Rigid locating tube
- High accuracy of fit
- Extremely robust version
- Suitable for high tightening and loosening torque
- Special tool steel

Application range: Mercedes lifting axle

3/4"


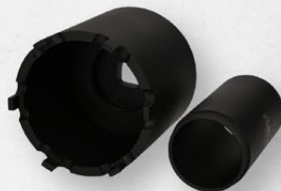
D1 mm	D2 mm	D3 mm	D4 mm	H1 mm	H2 mm	Studs	B mm
115	100	91	46	82	142	6	11


460.5645

Grooved nut spanner set with guide tube for Mercedes

- Internal square drive to DIN 3121 / ISO 1174
- including threaded guide tube
- High accuracy of fit
- Extremely robust version
- Suitable for high tightening and loosening torque
- Special tool steel

Application range: Mercedes hypoid axles HO 5/5

3/4"

**2
pcs**
460.5420

Grooved nut spanner set with 3 guide tubes for Mercedes

- Internal square drive to DIN 3121 / ISO 1174
- including threaded guide tubes
- High accuracy of fit
- Extremely robust version
- Suitable for high tightening and loosening torque
- Special tool steel

Application range: Mercedes planetary hub rear axles (European axles) 10 tons + 13 tons: HL7/1, HL7/2, HL7/18, HD7/8, HD7/9, HL7/0, HL7/015, HL7/021, HL7/3, HD7/2, HD7/190G, HD7/0160G planetary hub front axle 7 tons: AL7/1

3/4"

**4
pcs**
For the NR7/4 planetary hub axles / trailing axle, the base body can be used without a guide tube.

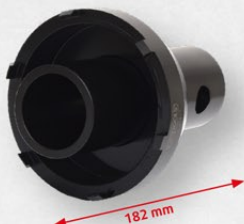
450.0167

KS TOOLS
PREMIUM TOOLS

Wrench with 6 pins for Mercedes

- Internal square drive to DIN 3121 / ISO 1174
- Rigid locating tube
- High accuracy of fit
- Extremely robust version
- Suitable for high tightening and loosening torque
- Special tool steel

Application range: Mercedes Actros
Rear axle, HL/HL 8 (Hypoid) etc.



3/4"

Inner-Ø mm	Outer-Ø mm	H mm	Inner stud Ø mm	Studs	Stud width mm
105	125	182	115	6	10

460.5425

KS TOOLS
PREMIUM TOOLS

Grooved nut spanner set with 2 guide tubes for Mercedes

- Internal square drive to DIN 3121 / ISO 1174
- Including threaded guide tubes
- High accuracy of fit
- Extremely robust version
- Suitable for high tightening and loosening torque
- Special tool steel

Application range: Mercedes rear axle 749.0,
trailing rocker arm axle NS4/2, NS4/10 and
pinion axles HL6/1, HL6/2, HL6/3, HD6/3



3/4"

3
pcs

460.0870

KS TOOLS
PREMIUM TOOLS

Wrench with 6 pins for Mercedes

- Ideally suited for loosening the rear nut on the differential
- Internal square drive to DIN 3121 / ISO 1174
- Extremely versatile
- Suitable for exact torque
- Special profile with 6 internal studs
- Suitable for high tightening and loosening torque
- Special tool steel



3/4"

D1 mm	D2 mm	D3 mm	H mm	Studs	B mm
135	126	102	103	6	8,7

460.1065

KS TOOLS
PREMIUM TOOLS

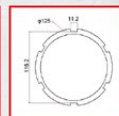
Groove nut wrench with 6 pins with guide tube for Mercedes

- Internal square drive to DIN 3121 / ISO 1174
- Rigid locating tube
- High accuracy of fit
- Extremely robust version
- Suitable for high tightening and loosening torque
- Special tool steel

Application range: Mercedes (2640) drive axle



3/4"



D1 mm	D2 mm	D3 mm	D4 mm	H1 mm	H2 mm	Studs	B mm
145	125	116	64	84	145	6	11

450.0251

KS TOOLS
PREMIUM TOOLS

Slotted nut wrench for rear axle nut for Mercedes

- With hexagon drive 32.0 mm
- For the dismantling and assembly of the rear axle nut
- High accuracy of fit
- Sturdy design
- Suitable for high tightening and loosening torque
- Drive tube Ø 35 mm
- Special tool steel

Application range: Mercedes Citaro



3/4"

Inner-Ø mm	Outer-Ø mm	H mm	Inner stud Ø mm	Studs	Stud width mm
122	139	310	123,5	6	10,4

460.4205

KS TOOLS
PREMIUM TOOLS

Axle nut socket spanner for Mercedes

- Internal square drive to DIN 3121 / ISO 1174
- 8-point
- High accuracy of fit
- Extremely robust version
- Suitable for high tightening and loosening torque
- For machinery usage
- Special tool steel

Application range: Axle nut rear axle Mercedes
2636, 2640, 414 (2006 - 2016)



3/4"

D1 mm	D2 mm	D3 mm	H mm	Studs	B mm
121	107	98	82	6	12

450.0201

Axle nut wrench for SAF

- Six sided drive 36 mm
- Positive drive of the axle nut
- Any extensive slipping is avoided
- Milled out profile
- Sturdy design
- Can be used with an impact wrench or torque wrench
- Special tool steel

Application range: SAF axle trailers


W mm	W mm	Ø mm	H mm
85,0	36	118,0	82,0

460.5445

Axle nut wrench for Renault

- Internal square drive to DIN 3121 / ISO 1174
- 6 point
- High accuracy of fit
- Extremely robust version
- Suitable for high tightening and loosening torque
- Special tool steel

3/4"


W mm	L mm
77,0	200,0


460.5455

Axle nut wrench for Renault and Iveco

- Internal square drive to DIN 3121 / ISO 1174
- 6 point
- High accuracy of fit
- Extremely robust version
- Suitable for high tightening and loosening torque
- Special tool steel

1"


W mm	Ø mm	H mm
80,0	100,0	137,5

450.0110

Axle nut wrench for SAF

- Positive drive of the axle nut
- Sturdy design
- Can be used with an impact wrench or torque wrench
- Ideally suited for brake restoration working
- Forward tension with SW 32 mm is at 150 Nm
- Angle of rotation 20-30° with SW 46
- Special tool steel

Application range: SAF Euro axle etc.


W mm	W mm	H mm
140,0	32	100,0

460.4705

KSTOOLS
PREMIUM TOOLS

Wheel hub puller set for SAF

- For 140 mm hole diameters
- Sturdy design
- Threaded spindle for high pull-off force - 32 mm drive
- Special tool steel



2
pcs

450.0221

KSTOOLS
PREMIUM TOOLS

Axle nut wrench for Scania

- for mounting and dismounting Scania axle nuts
- Internal square drive to DIN 3121 / ISO 1174
- 8-point
- High accuracy of fit
- Extremely robust version
- Suitable for high tightening and loosening torque
- For machinery usage
- Special tool steel

Application range: Scania front axle (e.g. 124L / 144L) Series 4 from 1996 for vehicles from 16 t Mounting and dismounting the axle nut in front of the brake disc



1"



mm	Ø mm	T mm	H mm
80	98,0	25,0	75,0

460.1365

KSTOOLS
PREMIUM TOOLS

Axle nut wrench for Scania

- for mounting and dismounting Scania axle nuts
- Internal square drive to DIN 3121 / ISO 1174
- 8-point
- High accuracy of fit
- Extremely robust version
- Suitable for high tightening and loosening torque
- For machinery usage
- Special tool steel

Application range: Axle nut Scania and Fuso front axle



3/4"

mm	Ø mm	H mm
80	103	94

450.0220

KSTOOLS
PREMIUM TOOLS

Axle nut wrench for Scania

- With hexagon drive 41.0mm
- 8-point
- Positive drive of the axle nut
- Any extensive slipping is avoided
- Milled out profile
- Sturdy design
- Can be used with an impact wrench or torque wrench
- Special tool steel

Application range: Scania front axle (e.g. 124L / 144L) Series 4 from 96 for vehicles above 16 t, removal and fitting of the axle nuts in front of the brake disc



mm	mm	Ø mm	T mm	H mm
80	41	105	25	98

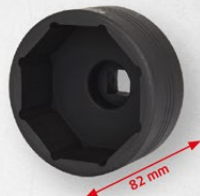
460.0425

KSTOOLS
PREMIUM TOOLS

Axle nut wrench for Scania, York and Fuso

- Internal square drive to DIN 3121 / ISO 1174
- 8-point
- High accuracy of fit
- Extremely robust version
- Suitable for high tightening and loosening torque
- Special tool steel

Application range: Scania, York and Fuso 10.5 t



3/4"

mm	Ø mm	H mm	T mm
95,0	117,0	82,0	44,0

460.1370

KSTOOLS
PREMIUM TOOLS

Axle nut wrench for Scania

- for mounting and dismounting Scania axle nuts
- Internal square drive to DIN 3121 / ISO 1174
- 8-point
- High accuracy of fit
- Extremely robust version
- Suitable for high tightening and loosening torque
- For machinery usage
- Special tool steel

Application range: Removal and installation of the axle nut of Scania rear axle



3/4"

mm	Ø mm	H mm
100,0	123,0	84,0

460.1745

KSTOOLS
PREMIUM TOOLS

Nut wrench with 4 pins for Scania

- Internal square drive to DIN 3121 / ISO 1174
- High accuracy of fit
- Special profile with 4 internal studs
- Extremely robust version
- Suitable for high tightening and loosening torque
- Special tool steel

Application range: Scania locknut 1338267

3/4"



D1 mm	D2 mm	D3 mm	Studs	B mm	H mm
87	76	70	4	6,5	145

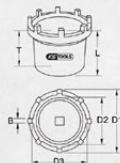
450.0236



8-pin T-nuts wrench for Scania

- With 3/4" square drive to DIN 3121 / ISO 1174
- Special profile with 8 external studs
- Positive drive of the axle nut
- Any extensive slipping is avoided
- Milled out profile
- Sturdy design
- Can be used with an impact wrench or torque wrench
- Special tool steel

Application range: Scania 420 (heavy duty upper axis) removal and installation of the mounting nut on the axle bearing



3/4"

D1 mm	D2 mm	D3 mm	Studs	B mm	T mm	H mm
119,0	90,0	10,03	8	9,5	75,0	100,0

Axle nut wrench with guide tube for Volvo

- Internal square drive to DIN 3121 / ISO 1174
- 6 point
- Extra long execution
- High accuracy of fit
- Extremely robust version
- Suitable for high tightening and loosening torque
- Special tool steel

Application range: Volvo FH rear axle

3/4"



KSTOOLS PREMIUM TOOLS	mm	D mm	Locating tube-Ø mm	H mm	T mm
460.1415	95	125	60	350	40
460.0680	105	135	60	355	40

450.0245



Axle nut wrench for Volvo

- Internal square drive to DIN 3121 / ISO 1174
- 6 point
- Slim design
- Sturdy design
- Positive drive of the axle nut
- Any extensive slipping is avoided
- Milled out profile
- Can be used with an impact wrench or torque wrench
- Special tool steel

Application range: Axle nut Volvo FH front axle cover, steering pin (e.g. FM 12)



3/4"

mm	D mm	T mm	H mm
80	10,00	17,0	55,0

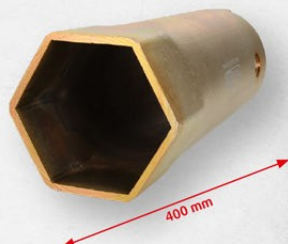
460.5440



Axle nut wrench for Setra and Kässbohrer

- Six sided drive 36 mm
- 6 point
- High accuracy of fit
- Extremely robust version
- Suitable for high tightening and loosening torque
- Special tool steel

3/4"



mm	mm	H mm
105,0	36	400,0

Clamp nut socket

- Internal square drive to DIN 3121 / ISO 1174
- For professional loosening and tightening
- Extremely versatile
- Rectangular form
- Usable with rectangular clamp nuts on the axle stub
- Milled out profile
- Suitable for high tightening and loosening torque
- For machinery usage
- Special tool steel

1/2"



KSTOOLS PREMIUM TOOLS	mm		H mm
460.5470	32,0	1/2"	36,0
460.5471	41,0	1/2"	50,0
460.5472	46,0	1/2"	52,0
460.5473	50,0	1/2"	62,0
460.5474	56,0	1/2"	68,0



Clamp nut socket

- Internal square drive to DIN 3121 / ISO 1174
- For professional loosening and tightening
- Extremely versatile
- Rectangular form
- Usably with rectangular clamp nuts on the axle stub
- Milled out profile
- Suitable for high tightening and loosening torque
- For machinery usage
- Special tool steel

3/4"



KSTOOLS PREMIUM TOOLS	mm		H mm
450.0106	56,0	3/4"	76,0
450.0107	60,0	3/4"	76,0

150.1467

KSTOOLS
PREMIUM TOOLS

Thread bottom tap for external thread M4 - M45

- For re-cutting and cleaning damaged outer threads
- No damage of the thread
- Suitable for right and left-handed thread
- Steplessly adjustable via knurled screw
- The chaser is well-guided due to the width of the jaw and does not tilt
- Can be used everywhere regardless of the thread length
- Simple handling
- Cutting of HSS steel with hardness 55-60



150.1435

KSTOOLS
PREMIUM TOOLS

Thread repair kit for internal and external threads

- For re-cutting and cleaning of internal and external threads
- Suitable for right and left handed threads up to Ø 140mm
- Quick cutting jaw modification possible from the magazine
- No damage of the thread due to the soft holding guides
- With 3 x die for commercial vehicle hub nut threads
- Special tool steel
- In durable plastic storage case



Chaser metric: 1.0 - 1.25 - 1.5 - 1.75 - 2.0 - 2.5 - 3.0 - 3.5 mm
Chaser imperial: 24-20-18-16-14-12-11-10-9-8-7-5-4 pitch
Thread file metric 0.8-1.0-1.25 - 1.5-1.75-2.0-2.5-3.0 mm
Thread file, imperial 24-20-18-16-14-12 - 11-10
Die: M18x1.5 / M20x1.5 / M22x1.5

Application: Trucks, land and construction machines, municipally and forestry technology on e.g. axle threads, hydraulic cylinder screw joints, steering and push rods



6
pcs



RELIABLE UNDER EXTREME OPERATING CONDITIONS!

460.3700

Universal commercial vehicle wheel hub extractor set

- Variable use for bolt circle diameters up to 190 mm
- Sturdy design
- Trapezoidal threaded spindle for high pull-off force
- Special tool steel



5
pcs

460.0685

Wheel hub puller for MAN

- Suitable for removing the wheel hub
- For 166 mm hole diameters
- Sturdy design
- Trapezoid thread spindle for high removal power - drive 30 mm
- Special tool steel

Application range: new MAN front axle wheel hub



2
pcs

460.1765

Universal commercial vehicle wheel hub extractor set

- Variable use for bolt circle diameter 110 mm - 448 mm
- Universal use for bolts up to max. Ø 30 mm
- With 2 rods and trapezoid thread spindle
- With 3 pressure pieces
- Includes 5 thread adaptor sets
- Special tool steel

Application range:

Sauer, BPW, Scania, Fuso, Hino



27
pcs



Universal wheel hub puller

- Extracting the wheel hubs and/or housing over the grease cap thread
- Six sided drive enable unscrewing on the cap
- Sturdy design
- Trapezoid thread spindle for high removal power - drive 30 mm
- Special tool steel



	Size outside thread	Size internal thread	mm	mm
450.0000	M115 x 1,5		30x260	30
450.0001	M125 x 2,0		30x260	30
450.0002		M135 x 2,0	30x260	30
450.0003		M136 x 2,5	30x260	30
450.0004		M155 x 3,0	30x260	30



460.3630

KSTOOLS
PREMIUM TOOLS

Wheel hub puller set for MAN

- including 20 t hydraulic cylinder
- Sturdy design
- Special tool steel

3
pcs



460.1080

KSTOOLS
PREMIUM TOOLS

Wheel hub puller for Scania

- With pressure plate for support
- Sturdy design
- Trapezoid thread spindle for high removal power - drive 30 mm
- Special tool steel

3
pcs

Application range: Scania (310 / 320) rear axle wheel hub



460.3795

KSTOOLS
PREMIUM TOOLS

Assembly and disassembly tool set for ZF axles

- ideally suited for mounting and dismounting wheel hubs with compact bearings
- can also be used with fixed wheel hubs
- for damage-free mounting of the shaft sealing rings
- for mounting the bellows with installed brake calliper
- Special tool steel

11
pcs

Application range: IF axles



440.0025
KSTOOLS
PREMIUM TOOLS

6
pcs

Pressure and pull hydraulic cylinder set 32t

- Optimal for universal use in car garages
- Suitable for both pressure and train uses
- With magnetic centring adapter
- Extremely high and uniform power construction
- Industrial execution with forged piston
- Pressure of the hydraulic cylinders can be combined with the impact body with impact force during use
- Universal usage with reduction M10-M22
- Ideally used with transporters and commercial vehicles
- With automatic piston return
- Special tool steel
- In durable steel storage case


Technical data:

Capacity: 32 t
Connection thread: Cejn quick coupling
Piston-inner thread: M24
Outer thread: 2.1/2"
Stroke: 113,0 mm

440.0480
KSTOOLS
PREMIUM TOOLS

7
pcs

Pressure and pull hydraulic cylinder set

- Optimal for universal use in car garages
- Suitable for both pressure and train uses
- Extremely high and uniform power construction
- Industrial execution with forged piston
- Pressure of the hydraulic cylinders can be combined with the impact body with impact force during use
- With automatic piston return
- Ideally used with transporters and commercial vehicles
- Special tool steel


Technical data:

Capacity: 45 t
Connection thread: Cejn quick coupling
Piston-inner thread: M27
Outer thread: 2.1/2"
Stroke: 70,0 mm

440.0060
KSTOOLS
PREMIUM TOOLS

Hydraulic foot pump set

- For simply agent press cylinders
- Safety valve for overload protection
- With automatic return
- Includes hydraulic hose with quick coupling


Quick coupling - drip-free!

440.0055
KSTOOLS
PREMIUM TOOLS

Pneumatic hydraulic pump set

- Pneumatic working
- For simply agent press cylinders
- Safety valve for overload protection
- With automatic return
- Includes hydraulic hose with quick coupling


Quick coupling - drip-free!


440.0063



Manometer

- With Cejn quick coupling for direct coupling to all KS Tools hydraulic pumps
- With easy-to-read scale in psi and bar

Caution: The maximum pressure values for the hydraulic cylinder and given in the appropriate operator's manual



440.0585



Hydraulic unit 32 t, with hydraulic pump and manometer

- Optimal for universal use in car garages
- Includes hydraulic pump and manometer
- Suitable for both pressure and train uses
- With magnetic centring adapter
- Extremely high and uniform power construction
- Industrial execution with forged piston
- Pressure of the hydraulic cylinders can be combined with the impact body with impact force during use
- Universal usage with reduction M10-M22
- Ideally used with transporters and commercial vehicles
- With automatic piston return
- Special tool steel



11
pcs

440.9996



Hydraulic unit 32-tonnes, with air hydraulic pump

- Optimal for universal use in car garages
- Suitable for both pressure and train uses
- With magnetic centring adapter
- Extremely high and uniform power construction
- Industrial execution with forged piston
- Pressure of the hydraulic cylinders can be combined with the impact body with impact force during use
- With pneumatic hydraulic pump
- Universal usage with reduction M10-M22
- Ideally used with transporters and commercial vehicles
- With automatic piston return
- Special tool steel
- In durable steel storage case

Quick coupling - drip-free!



9
pcs



440.0038



Klann hydraulic to KS MODULO 2-tool

- For using the Klann hydraulic cylinder (17 t) with KS Tools tool 1.1/2" internal thread
- Adapter 2.1/4"-14 UNS (Klann thread) to 1.1/2" MODULO 2
- Special tool steel



440.0036



KS hydraulic MODULO 2 to Klann tools

- For use with the KS Tools hydraulic cylinder MODULO 2 (8.5-22 t) with Klann special tool
- Adapter 1.1/2" MODULO 2 to 2.1/4"-14 UNS (Klann thread)
- Special tool steel



440.0409



KS hydraulic MODULO 2 to Klann (commercial vehicles-special tools)

- For using the KS tools hydraulic cylinder MODULO 2 (32t) with the Klann special tool (connection 2.3/4"-16 UNS)
- Adapter 2.1/2" MODULO 2 to 2.3/4"-16 UNS (Klann thread)
- Special tool steel

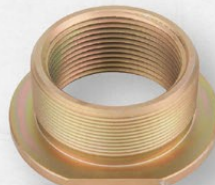


440.0034



KS hydraulic MODULO 2 to Sauer, Müller, KS MODULO 1 tools

- For use of the KS Tools hydraulic cylinder MODULO 2 (8.5-22 t) with Sauer-, Müller-, KS MODULO 1 special tools
- Adapter 1.1/2" MODULO 2 to 2.1/4"-16 UN (Sauer, Müller, KS MODULO 1)
- Special tool steel



440.0407



Paschke hydraulic to KS MODULO 2 tools

- For using the Paschke hydraulic cylinder with KS Tools special tools MODULO 2
- Adapter M68x2 mm (Paschke thread) to 1.1/2" MODULO 2
- Special tool steel

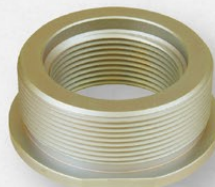


440.0408



KS hydraulic to Paschke tools

- For using the Paschke KS Tools hydraulic cylinder MODULO 2 (8.5-22 t) with Paschke special tools
- Adapter 1.1/2" MODULO 2 auf M68x2 mm (Paschke thread)
- Special tool steel



440.0037



KS hydraulic MODULO 2 to KS commercial vehicles-special tools

- For use with hydraulic cylinder MODULO 2 (16 and 22 t) to KS Tools tools MODULO 2 with 2.1/2" thread
- Adapter 1.1/2" MODULO 2 to 2.1/2" thread MODULO 2 (large traverse - commercial vehicles)
- Special tool steel



440.0590

KS TOOLS
PREMIUM TOOLS

Wheel hub puller set for 8 and 10 bolts for 32 t

- for disassembly of truck wheel hubs with 8 or 10 bolts (275 mm / 335 mm)
- Use in conjunction with 32t hydraulic cylinder (440.0025) with impact function
- ideal for pressing out wheel hub with compact bearing
- Sturdy design
- Secure and easy to use
- ideal for use with wheel bearing set for Scania (440.0375)
- Special tool steel
- In durable plastic storage case

Recommended hydraulic cylinder: 32t (440.0025)



11
pcs



440.0490

KS TOOLS
PREMIUM TOOLS

Puller set for hub without wheel stud rim for 32 t

- for the effective pressing out of firmly rusted bearings with external hubs of straight shafts
- Minimum work time
- Secure and easy to use
- Special tool steel

Recommended hydraulic cylinder: 32t (440.0025)

Application range: Mercedes Atego, Actros, MAN TGA, TGS, TGX, Volvo FL, Renault Kerax, Magnum, Midlum, Premium and all brands with the same bolt arrangement



3
pcs

440.0365

KS TOOLS
PREMIUM TOOLS

Spacer screw M22 for wheel hub puller set (440.0590)

- for extending the pressure rod
- ideal for axles with hub planetary gear in the wheel hub
- Special tool steel



440.0495

KS TOOLS
PREMIUM TOOLS

Hub pullers for low trailers for 32 t and 45 t

- for pressing out the 225 mm hub with 10 screws
- Hubs with unit bearings on straight shafts can be released in this way
- Use in connection with threaded plate (440.0364)
- Sturdy design
- Secure and easy to use
- Special tool steel

Recommended hydraulic cylinder:
32 t (440.0025) and
45 t (440.0480)



Article can only be used in combination with 440.0593.



15
pcs

440.0610

KS TOOLS
PREMIUM TOOLS

Wheel hub puller set for 8 and 10 bolts for 45 t

- for disassembly of truck wheel hubs with 8 or 10 bolts (275 mm / 335 mm)
- Use in conjunction with 45t hydraulic cylinder (440.0480) with impact function
- ideal for pressing out wheel hub with compact bearing
- Sturdy design
- Secure and easy to use
- ideal for use with wheel bearing set for Scania (440.0375)
- Special tool steel
- In durable plastic storage case



Recommended hydraulic cylinder:
45t (440.0480)

12
pcs



440.0615

KS TOOLS
PREMIUM TOOLS

Puller set for hub without wheel stud rim for 45 t

- for the effective pressing out of firmly rusted bearings with external hubs of straight shafts
- Minimum work time
- Secure and easy to use
- Special tool steel

Recommended hydraulic cylinder: 45t (440.0480)

Application range: Mercedes Atego, Actros, MAN TGA, TGS, TGX, Volvo FL, Renault Kerax, Magnum, Midlum, Premium and all brands with the same bolt arrangement



3
pcs

450.0080
KSTOOLS
PREMIUM WERKZEUGE
PREMIUM TOOLS

Bearing assembly and deassembly tool set

- Can be used manually with a hammer or workshop press
- Optimal placing through the pressure plates
- For easy and damage free assembly
- For the correct dismantling and assembly of bearings
- Suitable for commercial, agricultural engineering and construction machines
- Forged, robust execution
- Special tool steel
- In durable plastic storage case

5
pcs

605.0005
KSTOOLS
PREMIUM WERKZEUGE
PREMIUM TOOLS

Separator set inclusive with yoke ø 30,0 - 220,0 mm

- For the removal of secure bearings and bushes
- Extremely robust spindle with inductively hardened thread
- Hydraulic thrust spindle available
- Special tool steel
- In durable steel storage case

3
pcs

460.1380
KSTOOLS
PREMIUM WERKZEUGE
PREMIUM TOOLS

MAN wheel bearing puller

- Ideally suited to the removal of old wheel bearings
- Sturdy design
- Trapezoid thread spindle for high removal power - drive 30 mm
- Special tool steel

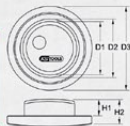
Application range: MAN 33460,
410 and 414 - break disc bearing front axle

10
pcs
ø 108 mm
30 mm


Wheel bearing installation aid for DAF

- Ideally suited for mounting the wheel bearing and the sealing ring on the front axle
- Facilitates installation due to constant force
- time- and cost-efficient
- Special tool steel

Application range: DAF CF



	D1 mm	D2 mm	D3 mm	H1 mm	H2 mm
460.4375	61,5	69,5	124,5	22,6	35,0
460.4370	73,5	81,5	137,5	22,6	35,0
460.4380	91,5	99,5	147,5	22,6	35,0

440.0375

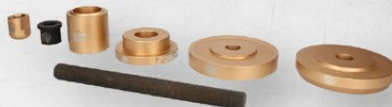
PREMIUM-WERKZEUGE
KS TOOLS
PREMIUM TOOLS

Wheel bearing set for Scania for 32t and 45t

- For the assembly and disassembly of compact bearings on the front axle
- ideal use with wheel hub puller set (440.0360) and 32t hydraulic cylinder (440.0025 with impact function)
- Sturdy design
- Secure and easy to use
- Special tool steel
- In durable plastic storage case

Recommended hydraulic cylinder: 32t (440.0025) and 45t (440.0480)

Application range: Wheel bearing front axle Scania



7
pcs

460.4135

PREMIUM-WERKZEUGE
KS TOOLS
PREMIUM TOOLS

Wheel bearing mounting kit for Scania

- For mounting the inner wheel bearing on the rear axle
- Extra heavy and solid execution
- Including adapter ring
- Special tool steel



2
pcs

460.4130

PREMIUM-WERKZEUGE
KS TOOLS
PREMIUM TOOLS

Wheel bearing puller set for Scania

- ideally suited for removing stuck wheel bearings
- Sturdy design
- Threaded spindle for high pull-off force - 30.0 mm drive
- Special tool steel

Application range: Scania rear axle



14
pcs

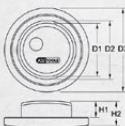
460.4005

PREMIUM-WERKZEUGE
KS TOOLS
PREMIUM TOOLS

Wheel bearing installation aid for Volvo

- Ideally suited for mounting the wheel bearing and the sealing ring on the left axle
- Facilitates installation due to constant force
- time- and cost-efficient
- Special tool steel

Application range:
Volvo FM



D1 mm	D2 mm	D3 mm	H1 mm	H2 mm
51	58	109	21	34

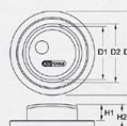
460.4000

PREMIUM-WERKZEUGE
KS TOOLS
PREMIUM TOOLS

Wheel bearing installation aid for Volvo

- Ideally suited for mounting the wheel bearing and the sealing ring on the front axle
- Facilitates installation due to constant force
- time- and cost-efficient
- Special tool steel

Application range:
Volvo FM



D1 mm	D2 mm	D3 mm	H1 mm	H2 mm
61	68	124	21	34

460.3995

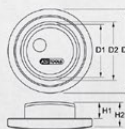
PREMIUM-WERKZEUGE
KS TOOLS
PREMIUM TOOLS

Wheel bearing installation aid for Volvo

- Ideally suited for mounting the wheel bearing and the sealing ring on the rear axle
- Facilitates installation due to constant force
- time- and cost-efficient
- Special tool steel

Application range: Volvo FM

D1 mm	D2 mm	D3 mm	H1 mm	H2 mm
83	94	148	26	40



460.3620

**Kingpin press 75 t
with set of sleeves**

- Suitable for quick insertion and removal of king pins
- Ideal for cylindrical and conical bolts
- No removal of the axle required
- Press unit is 360° rotatable
- Swivelling, rotatable and with height adjustment for components that are difficult to access
- Including pneumatic hydraulic foot pump with quick lift, hydraulic cylinder, most common sleeves and pressure pieces
- Secure and easy to use
- Special and compact design
- time- and cost-efficient


**29
pcs**
Technical data:

Capacity:	75 t
Stroke:	160,0 mm
Inner width:	260 mm
Operating pressure:	max: 700 bar
Volume:	1,8 l



Ø 24 mm

Ø 34 mm

Ø 47 mm

Ø 47 mm

Ø 47 mm

Ø 61 mm

Ø 95 mm

Ø 39 mm

Ø 50 mm


500.8480

KSTOOLS
PREMIUM TOOLS

Induction Heat Gun Set

- For loosening rusted and seized connections
- For loosening "insoluble" glued connections
- Induction principle
- Pinpoint heating in seconds
- Heating of components up to max. 790 °C (red-hot)

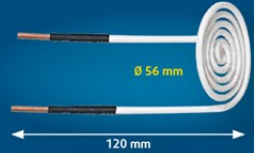
Application range: Screws, nuts and bolts, exhaust clamps and pipes, lambda probes, running gear, stuck bearings, ball joints, steering (e.g. tracking adjustment screws), chemically micro-encapsulated threaded connections (bonded), warming of bearing housings during dismantling and assembly

6
pcs



+

1.000 W



980.1010

Manual lever grease gun with flexible tube

- For cartridges and buckets and/or also for loose grease
- Fill capacity 400g
- Flexible tube
- Mirror polished



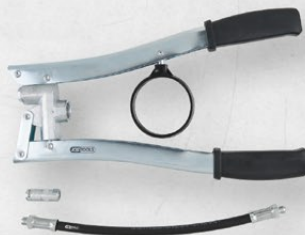
370 mm

D mm	L mm
57,0	370,0

980.1021

Two-hand grease gun

- For working with grease up to NLGI2
- Grease gun piston diameter 10.0 mm
- Quick and easy cartridge replacement
- Clean and complete emptying of the cartridge
- Fill levels can be checked at all times
- Ergonomic anti-slip handle


Technical data:

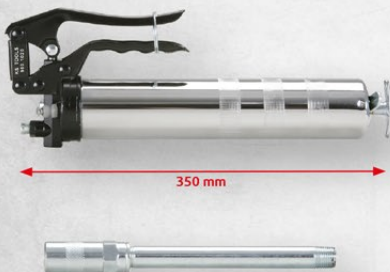
Connection thread:	M10 x 1,0
Operating pressure:	400 bar
Burst pressure system (bar):	850 bar
Burst pressure grease gun head (bar):	1200 bar
NLGI class:	< 2
Output per stroke cm ³ :	2,10 cm ³
Capacity:	500 g

L mm	Hose length mm
650,0	300,0


980.1020

Single handed grease gun with rigid grease tube

- Perfect single handed usage
- For cartridges and buckets and/or also for loose grease
- Fill capacity 400g
- Rigid grease tube
- Mirror polished



350 mm

D mm	L mm
57,0	350,0

515.3900

Pneumatic grease gun for stroke by stroke conveyance of grease

- Air exhaust through the handle
- For one handed operation with balanced ergonomic design
- For cartridges and buckets and/or also for loose grease
- Includes flexible hose and nozzle
- Includes 1/4" coupling connector
- Grease feeding: one stroke per trigger actuation


Technical data:

Output pressure:	260 bar
Output per stroke cm ³ :	1,30
Capacity:	400 g
Air consumption:	170 l/min
Operating pressure:	6,3 bar (90 psi)
Connection thread:	1/4"PT

B mm	L mm
165,0	400,0

Cordless grease gun 400 ml

- Handy and ergonomic dual component housing
- For standard grease cartridges or direct filling
- Ideal for heavy greasing with counter pressure
- With flexible 750 mm filling tube
- Carbon brushes interchangeable
- High performance lithium-ion battery
- With a rechargeable battery that can be process up to 15 cartridges
- Longer running time through higher load capacity
- Fast charging function (1 hour)
- Automatic turn off charging station
- In durable plastic storage case

Technical data::

Operating pressure:	420 bar / 42 MPa
NI.GI class:	< 2
Grease filling:	75 g / min
Capacity of the unit:	400 ml
No load current:	3 A
Operating current:	2,0 ~ 5,5 A
Charging time:	1 Std.
Rechargeable battery:	18 V - 4,0 Ah

KSTOOLS PREMIUM TOOLS	L mm	B mm	H mm	Spare carbon brushes set	Battery pack	Number of batteries	Charger
515.3559	237,0	80,0	487,0	515.3596	515.3599	0	0
515.3560	237,0	80,0	487,0	515.3596	515.3599	1	1
515.3561	237,0	80,0	487,0	515.3596	515.3599	2	1



Flexible hose with nozzle

- Made from rubber
- Includes four-jaw nozzle
- For use with the manually operated grease gun



KSTOOLS PREMIUM TOOLS		L mm
980.1011	1/8"PT	300,0
980.1012	1/8"PT	500,0

980.1014



Nozzle extension

- Made from metal
- Includes four-jaw nozzle
- For use with the manually operated grease gun



	L mm
1/8"PT	160,0

980.1013



Nozzle

- Made from metal
- Four-jaw nozzle
- For use with the manually operated grease gun



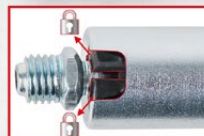
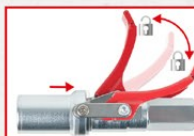
	L mm
1/8"PT	

980.1108



Quick-Lock coupling for grease guns

- Ideal for commercially available manual, battery operated and pneumatic grease guns
- Secure greasing during maintenance work without holding in place
- Uncoupling up to over 690 bar pressure possible
- No grease loss under high load operation
- No spraying when uncoupling
- Simple and secure loosening, even under high pressure through lever actuation
- For all common grease nipple types according to DIN and SAE
- With integrated check valve
- Integrated seal for long service life
- Very low wear
- With 4 hardened tool steel jaws



	L mm	H mm
1/8"PT	74,0	38,0

980.1100



Grease gun adaptor set

- For standard hand, cordless and pneumatic grease guns
- Adaptor with sliding sleeve for break-proof connection
- Straight and angled grease nipple
- For grease nipples out of steel, brass and stainless steel

Application range: Cone, funnel, ball and flat grease nipples



7
pcs

Bearing lubrication aid

- Ideally suited to greasing the bearings
- Residual grease is protected against dust and oxidation
- For different bearing diameters
- Permanently lockable
- Extremely versatile

Application range: tapered roller bearings



	Inner-Ø mm	H mm	B mm
460.4970	104,0	130,0	160,0
460.4965	126,0	130,0	160,0
460.4975	149,0	130,0	160,0

Brass and aluminium punch

- For extracting bearing, bolts and bushes etc.
- Rimed handle for better control
- Brass / Aluminium



	Material	Ø mm	L mm
156.0415	Brass	20,0	300,0
156.0416	Aluminium	30,0	300,0

460.1210



Bearing lubrication aid

- Ideally suited to greasing the bearings
- The grease is pressed through the rollers/bushes by pressing down on the piston
- For 150-200 mm bearing diameter
- Permanently lockable
- With triple sealing against grease leaks
- Residual grease is protected against dust and oxidation
- Aluminium
- Extremely versatile



H mm	B mm
240,0	240,0

440.0190



Press tool

- Forged press tool for removing the ball joints and stabiliser ball pins
- Maximum force 16 t
- Ideal for use with a hydraulic cylinder
- Optimally used with ball joint sets 440.0230 and 440.0240 as well as stabiliser ball pin set 440.0235
- Secure and easy to use
- Minimum work time
- Special tool steel



Recommended hydraulic cylinder:

- 8.5 t (440.0730),
- 14 t (440.0015),
- 16 t (440.0005),
- 22 t (440.0010)

440.0730



Pressure and pull hydraulic cylinder set, 8.5t

- For the assembly and disassembly of silent bearings, steering pin bolts, wheel bearings etc.
- Can be used in the narrowest of spaces
- With adjustable pressure rods and impact body
- With automatic piston return
- Special tool steel



Technical data:

Capacity: 8,5 t
Connection thread: Cejn-Quick coupling industrial forged execution
Piston: M22
Piston-inner thread: 1.1/2"
Outer thread: 25,0 mm
Stroke:



4
pcs



440.0015



Short-stroke hydraulic cylinder set 14t

- For the assembly and disassembly of silent bearings, steering pin bolts, wheel bearings etc.
- With adjustable pressure rod
- Maximum pressure with little effort
- Especially for use with press tool and press stand 440.0190 and 440.0180
- With automatic piston return
- Special tool steel



Technical data:

Capacity: 14 t
Connection thread: Cejn-Quick coupling industrial forged execution
Piston: M24
Piston-inner thread: 1.1/2"
Outer thread: 55,0 mm
Stroke:



3
pcs



440.0390



Universal tool set for changing wheel bolts on trucks

- for quick and easy replacement of wheel bolts
- on trucks and trailers
- Changing the wheel studs without hammer or physical exertion
- Bolt change in less than 30 seconds
- Used in conjunction with press clamp (440.0190) and 14t (440.0015) or 8.5t hydraulic cylinder 440.0730



8
pcs

515.3880

KS TOOLS
PREMIUM TOOLS

Vibro impact pneumatic chisel hammer set

- With non slip soft grip handle
- Air exhaust through the handle
- Ergonomic designed handle
- Ideal for industry
- Efficient, gentle loosening of screw fittings
- With stepless impact regulation
- Vibration dampened
- Cold insulated handle
- Includes 1/4" coupling connector
- Ultra light housing from two component plastic



6
pcs



150.1608

KS TOOLS
PREMIUM TOOLS

Impact tie rod tool

- Vibration supported release of tracking rods, contoured screws or screws in the axle area etc.
- Adjustable in connection with a pneumatic chisel hammer
- Thanks to the special vibrating mandrel, an impact impulse is given to the screws to be released
- which loosens the rust and aids the release process
- Pneumatic chisel adapter (10 mm) for use with pneumatic chisel hammers on the market
- Utilisation of vibration and shock pulse of Vibro Power pneumatic hammer
- Special tool steel



B mm	L mm	U opening mm
50,0	290,0	27,0



515.3884

KS TOOLS
PREMIUM TOOLS

Vibro-Impact ball joint releaser

- Vibration supported release on ball joints
- Adjustable, e.g. conical seat connections to wheel bearing houses and wishbones
- Pneumatic chisel adapter (10 mm) for use with pneumatic chisel hammers on the market
- Utilisation of vibration and shock pulse of Vibro Power pneumatic hammer
- Special tool steel



L mm	B mm	H mm	Drive
68,0	40,0	130,0	Ø 10 mm

515.3961

KS TOOLS
PREMIUM TOOLS

Vibro-Impact punch

- Suitable for use with industry-standard percussion hammers (10.0 mm holder)
- Universal use for bodywork and chassis repair
- Extension of the working range
- Utilisation of vibration and shock pulse of Vibro Power pneumatic hammer
- Robust chisel forged out of one piece
- Special tool steel

Application: Cutting exhausts, loosening of ball joint, extracting bolts and cutting metal sheets



Ø mm
6,5

Vibro-Impact exhaust chisel

- Suitable for use with industry-standard percussion hammers (10.0 mm holder)
- Universal application for work on exhaust systems
- Specially designed sounds enable the exhaust pipe (inner or outer) to be replaced to be correctly separated from the remaining one, without damaging it.
- Rotatable
- Extension of the working range
- Utilisation of vibration and shock pulse of Vibro Power pneumatic hammer
- Robust chisel forged out of one piece
- Special tool steel



515.3962 515.3963	Application for
	Internal pipe
	External pipe

515.3964


Vibro-Impact sheet metal cutting tool with anti-rotation device

- Suitable for use with industry-standard percussion hammers (10.0 mm holder)
- Universal use for bodywork and chassis repair
- Extension of the working range
- Utilisation of vibration and shock pulse of Vibro Power pneumatic hammer
- Robust chisel forged out of one piece
- Special tool steel

Application: Cutting exhausts, loosening of ball joint, extracting bolts and cutting metal sheets

8 mm
20,0


515.3965


Vibro-Impact flat chisel with anti-rotation device

- Suitable for use with industry-standard percussion hammers (10.0 mm holder)
- Universal use for bodywork and chassis repair
- Extension of the working range
- Utilisation of vibration and shock pulse of Vibro Power pneumatic hammer
- Robust chisel forged out of one piece
- Special tool steel

Application: Cutting exhausts, loosening of ball joint, extracting bolts and cutting metal sheets

8 mm
19,0


515.3966


Vibro-Impact half-round chisel with anti-rotation device

- Suitable for use with industry-standard percussion hammers (10.0 mm holder)
- Universal use for bodywork and chassis repair
- Extension of the working range
- Utilisation of vibration and shock pulse of Vibro Power pneumatic hammer
- Robust chisel forged out of one piece
- Special tool steel

Application: Cutting exhausts, loosening of ball joint, extracting bolts and cutting metal sheets

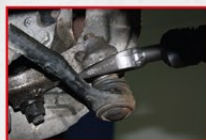
8 mm
26,0



Vibro-Impact Separating Fork

- Suitable for use with industry-standard percussion hammers (10.0 mm holder)
- Universal use for bodywork and chassis repair
- Extension of the working range
- Utilisation of vibration and shock pulse of Vibro Power pneumatic hammer
- Robust chisel forged out of one piece
- Special tool steel

Application: Cutting exhausts, loosening of ball joint, extracting bolts and cutting metal sheets



515.3967 515.3968 515.3969	8 mm
515.3967 515.3968 515.3969	20,0
	24,0
	35,0

515.4880


High-performance vibro-impact pneumatic chisel hammer

- With non slip handle
- Air exhaust through the handle
- Ergonomic designed handle
- Air exhaust integrated in the handle
- Ideal for industry
- Efficient, gentle loosening of screw fittings
- With stepless impact regulation
- Vibration dampened
- Cold insulated handle
- Includes 1/4" coupling connector
- Ultra light housing from two component plastic



Technical data:

Chisel holder:	15 mm
Number of blows:	2500 blows/min
Vibration acceleration:	20,4 m/s²
Noise performance level:	115 dB(A)
Noise pressure level:	104 dB(A)
Air consumption:	210 l/min
Operating pressure:	max. 6,3 bar (90 psi)
Connection thread:	1/4" NPT

515.4881


Vibro-Impact tie rod remover

- Pneumatic chisel adapter (15 mm) for use with pneumatic chisel hammers on the market
- Extension of the working range
- Utilisation of the vibration and impact impulse of the high-performance vibro-impact
- Robust chisel forged out of one piece
- Special tool steel



515.4882

KS TOOLS
PREMIUM TOOLS

Vibro-Impact Flat Chisel, XL

- Pneumatic chisel adapter (15 mm) for use with pneumatic chisel hammers on the market
- Extension of the working range
- Utilisation of the vibration and impact impulse of the high-performance vibro-impact
- Robust chisel forged out of one piece
- Special tool steel



515.4883

KS TOOLS
PREMIUM TOOLS

Vibro-Impact hammer insert

- Pneumatic chisel adapter (15 mm) for use with pneumatic chisel hammers on the market
- Extension of the working range
- Utilisation of the vibration and impact impulse of the high-performance vibro-impact
- Robust chisel forged out of one piece
- Special tool steel



515.4884

KS TOOLS
PREMIUM TOOLS

Vibro-Impact Pointed Chisel, XL

- Pneumatic chisel adapter (15 mm) for use with pneumatic chisel hammers on the market
- Extension of the working range
- Utilisation of the vibration and impact impulse of the high-performance vibro-impact
- Robust chisel forged out of one piece
- Special tool steel



515.4885

KS TOOLS
PREMIUM TOOLS

Vibro-Impact concave insert

- Pneumatic chisel adapter (15 mm) for use with pneumatic chisel hammers on the market
- Extension of the working range
- Utilisation of the vibration and impact impulse of the high-performance vibro-impact
- Robust chisel forged out of one piece
- Special tool steel



515.4886

KS TOOLS
PREMIUM TOOLS

Vibro-Impact Drifters

- Pneumatic chisel adapter (15 mm) for use with pneumatic chisel hammers on the market
- Extension of the working range
- Utilisation of the vibration and impact impulse of the high-performance vibro-impact
- Robust chisel forged out of one piece
- Special tool steel



L mm	Ø mm
235,0	20,0

700.1350

KS TOOLS
PREMIUM TOOLS

Universal bearing and bush driver set

- Universal applicable range
- Can be used manually with a hammer or workshop press
- Applications from 18.0 - 65.0 mm
- Pressure plates are for the two driving spindles
- Special tool steel
- In durable plastic storage case



51
pcs

150.9710

KS TOOLS
PREMIUM TOOLS

Universal bearing and bush driver set

- for gentle driving of bearing and radial sealing rings
- Universal applicable range
- Can be used manually with a hammer or workshop press
- Applications from 70.0 - 150.0 mm
- Pressure plates are for the two driving spindles
- Special tool steel
- In durable plastic storage case



21
pcs

700.1760

KS TOOLS
PREMIUM TOOLS

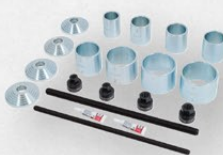
Press and pull sleeve set

- For the assembly and disassembly of bearings
- Ideally for silent bearings, hydro bearings, bushings, ball bearings, simmer rings etc.
- Universal use for passenger cars, trucks, communal, agricultural and forest vehicles
- Outstanding to use also in connection with workshop press or hollow piston cylinder
- According to use application the sheaths individually can be reworked
- Pressure bearing protects against increased friction during the process
- In durable plastic storage case

Attention: the spindles need to be greased with a good lubricant for each application! Do not overload spindles, otherwise the thread lengthens and the pitch of the nut and spindle no longer match. The result: the nuts will seize up. Always check the applied force at the drive with a torque wrench!

Maximum permitted torque:

Spindle M10x1,5 60 Nm
Spindle M12x1,5 100 Nm
Spindle M14x1,5 180 Nm
Spindle M16x1,5 250 Nm



20
pcs

700.1550

KSTOOLS
PREMIUM WERKZEUGE

37
pcs

Press and pull sleeve kit

- For the assembly and disassembly of bearings
- Ideally for silent bearings, hydro bearings, bushings, ball bearings, simmer rings etc.
- Universal use for passenger cars, trucks, communal, agricultural and forest vehicles
- Outstanding to use also in connection with workshop press or hollow piston cylinder
- According to use application the sheaths individually can be reworked
- Pressure bearing protects against increased friction in the process
- In durable plastic storage case

Caution: The spindles must be greased before first use! Overloading leads to unwanted material stresses or breakage. Always check the power settings on the drive with a torque wrench. Not to be combined with other systems.

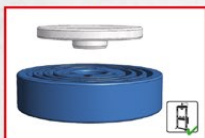
Maximum allowable torque moments:

Spindle (ACME) M10 x P1.5 60 Nm

Spindle (ACME) M12 x P2.0 120 Nm

Spindle (ACME) M14 x P2.0 150 Nm

Spindle (ACME) M16 x P2.5 250 Nm



700.1700

KSTOOLS
PREMIUM WERKZEUGE

36
pcs

Press and pull sleeve set

- For the assembly and disassembly of bearings
- Ideally for silent bearings, hydro bearings, bushings, ball bearings, simmer rings etc.
- Universal use for passenger cars, trucks, communal, agricultural and forest vehicles
- Outstanding to use also in connection with workshop press or hollow piston cylinder
- According to use application the sheaths individually can be reworked
- Pressure bearing protects against increased friction during the process
- In durable plastic storage case

Attention: the spindles need to be greased with a good lubricant for each application! Do not overload spindles, otherwise the thread lengths and the pitch of the nut and spindle no longer match. The result: the nuts will seize up. Always check the applied force at the drive with a torque wrench!

Maximum permitted torque:

Spindle M10x1,5 60 Nm

Spindle M12x1,5 100 Nm

Spindle M14x1,5 180 Nm

Spindle M16x1,5 250 Nm



700.1800

PREMIUM-WERKZEUGE
KS TOOLS
PREMIUM TOOLS

22
pcs

Compression and Tension Sleeve Extension Set, Level 1

- For the assembly and disassembly of bearings
- Ideally for silent bearings, hydro bearings, bushings, ball bearings, simmer rings etc.
- Universal use for construction machines, truck, municipally, country and forestry technology etc.
- Outstanding to use also in connection with workshop press or hollow piston cylinder
- According to use application the sheaths individually can be reworked
- Pressure bearing protects against increased friction during the process
- In durable plastic storage case
- Supplement set for 700.1700 / 700.1735

Attention: the spindles need to be greased with a good lubricant for each application! Do not overload spindles, otherwise the thread lengths and the pitch of the nut and spindle no longer match. The result: the nuts will seize up. Always check the applied force at the drive with a torque wrench!

Maximum permitted torque:

Spindle M10x1,5 60 Nm
Spindle M12x1,5 100 Nm
Spindle M14x1,5 180 Nm
Spindle M16x1,5 250 Nm
Spindle TR20x4 400 Nm



700.1735

PREMIUM-WERKZEUGE
KS TOOLS
PREMIUM TOOLS

13
pcs

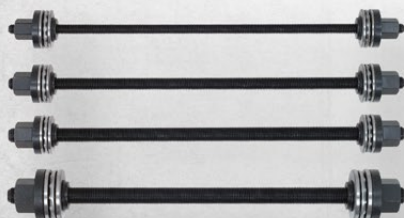
Spindle set for press and pull sleeve set

- With 4 spindles for KS press and pull sleeve set
- Thread lead: 1.5
- Pressure bearing protects against increased friction during the process
- Incl. special thread grease
- Chrome molybdenum

Attention: the spindles need to be greased with a good lubricant for each application! Do not overload spindles, otherwise the thread lengths and the pitch of the nut and spindle no longer match. The result: the nuts will seize up. Always check the applied force at the drive with a torque wrench!

Maximum permitted torque:

Spindle M10x1,5 60 Nm
Spindle M12x1,5 100 Nm
Spindle M14x1,5 180 Nm
Spindle M16x1,5 250 Nm



700.1805

PREMIUM-WERKZEUGE
KS TOOLS
PREMIUM TOOLS

14
pcs

Compression and Tension Sleeve Extension Set, Level 2

- For the assembly and disassembly of bearings
- Ideally for silent bearings, hydro bearings, bushings, ball bearings, simmer rings etc.
- Universal use for construction machines, truck, municipally, country and forestry technology etc.
- Outstanding to use also in connection with workshop press or hollow piston cylinder
- According to use application the sheaths individually can be reworked
- Pressure bearing protects against increased friction during the process
- In durable plastic storage case
- Supplement set for 700.1700 + 700.1800 / 700.1735 + 700.1800



700.1810

PREMIUM-WERKZEUGE
KS TOOLS
PREMIUM TOOLS

46
pcs

Master Compression and Tension Sleeve Set

- For the assembly and disassembly of bearings
- Ideally for silent bearings, hydro bearings, bushings, ball bearings, simmer rings etc.
- Universal use for construction machines, truck, municipally, country and forestry technology etc.
- Outstanding to use also in connection with workshop press or hollow piston cylinder
- According to use application the sheaths individually can be reworked
- Pressure bearing protects against increased friction during the process
- In durable plastic storage case

Attention: the spindles need to be greased with a good lubricant for each application! Do not overload spindles, otherwise the thread lengths and the pitch of the nut and spindle no longer match. The result: the nuts will seize up. Always check the applied force at the drive with a torque wrench!

Maximum permitted torque:

Spindle M10x1,5 60 Nm
Spindle M12x1,5 100 Nm
Spindle M14x1,5 180 Nm
Spindle M16x1,5 250 Nm
Spindle TR20x4 400 Nm



980.1090



Special thread grease for puller and pusher spindles

- Lubricant for components subjected to high static loads, e.g. threaded spindles
- Prevents excessive wear and seizing
- Irregularities in the surface to be protected are completely filled
- Minimises the friction thanks to the closed surface
- Effective protection against corrosion
- Increases the service life of threaded spindles
- Ensures reliable function even at high temperatures up to max. 1200°C



980.1085



Special thread grease for puller and pusher spindles and nuts subjected high loads

- Lubricant for components subjected to high static loads, e.g. threaded spindles
- Prevents excessive wear and seizing
- Irregularities in the surface to be protected are completely filled
- Minimises the friction thanks to the closed surface
- Effective protection against corrosion
- Increases the service life of threaded spindles
- Ensures reliable function even at high temperatures up to max. 1200°C



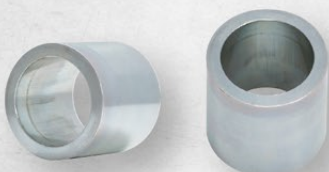
Assembly sleeves for slotted silent bearings on commercial vehicles

- Allows the pretensioning of slotted silent bearings on commercial vehicles
- Adaptor for original dimension to intake bore size with conical sleeve
- Universal solution
- For use with hydraulic and / or mechanical press tools
- Press the sleeve directly on the intake of the vehicle is possible
- Contains a selection of the most common diameters
- Polished inside wall for optimum sliding
- Sturdy design
- Low dimension

Application: Leaf spring, stabiliser, cab suspension etc.

Caution: This tool must be combined with parts of other sets (e.g. press and pull sleeve set)

Recommended mounting paste: e.g. MOLYKOTE G-Rapid Plus



460.3755



Universal Tension Sleeve Set with Hydraulic Cylinder 18 t

- For the assembly and disassembly of bearings
- Ideal for silent bearings, hydromounts, bushings, ball bearings, oil seals, etc.
- universal design for construction machines, trucks, municipal, agricultural and forestry technology, etc.
- for use with supplied hydraulic cylinder
- Sturdy design
- Special tool steel



24 pcs

460.3925



Double wishbone bushes set for DAF Ø 70 mm

- For mounting and dismounting the bushings on the wishbone of the rear axle
- Suitable for the front bearing and for the rear bearings with Ø 70mm
- Secure and easy to use
- In conjunction with a workshop press
- Special tool steel

Application range: DAF wishbone at the rear axle



8 pcs

460.4160



Socket and wishbone set for DAF Ø 75 mm

- For mounting and dismounting the bushings on the wishbone of the rear axle
- Suitable for the front and rear bearings with Ø 75mm
- Secure and easy to use
- In conjunction with a workshop press
- Special tool steel

Application range: DAF wishbone at the rear axle



8 pcs

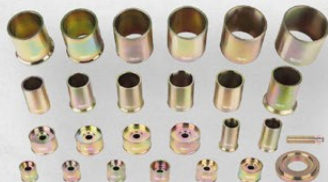
KSTOOLS	Size	L mm	Application for
700.1821	58→55	85,0	e.g. silent bushes for Iveco Eurosta anti-roll bar /leaf spring
700.1823	63→60	85,0	e.g. silent bushes for Iveco Eurosta anti-roll bar /leaf spring
700.1825	68→63	85,0	e.g. Mercedes anti-roll bar for Actros, Atego
700.1827	72→68	85,0	e.g. MAN front axle
700.1829	74→70	85,0	e.g. bearings with pins, Mercedes Actros Classic
700.1831	89→84	85,0	e.g. bearings with pins, Mercedes Actros anti-roll bar

440.0300

PREMIUM-AXLE-DRUCKWERKZEUGE
KS TOOLS
PREMIUM TOOLS

Universal press tool set

- For the assembly and disassembly of bearings, bushes and ball joints
- Adapter and pressure crank allow for use with the universal press stand (440.0180)
- 24 press sleeves in different sizes
- 61 various internal and external diameters between 30.5 mm and 79.7 mm
- Universal usage for passenger cars and transporters
- Excellent usage also with work bench press
- Special tool steel



26
pcs

440.9997

PREMIUM-AXLE-DRUCKWERKZEUGE
KS TOOLS
PREMIUM TOOLS

Universal press tool set for axle parts

- For the assembly and disassembly of bearings, bushes and ball joints
- Adapter and adapter ring allow for use with the universal press stand
- 22 press sleeves with internal and external diameters between 34.0 mm and 90.0 mm
- Universal usage for passenger cars and transporters
- Outstanding to use also in connection with workshop press or hydraulic cylinder
- Special tool steel

Caution: The spindles must be greased before first use! Overloading leads to unwanted material stresses or breakage. Always check the power settings on the drive with a torque wrench. Not to be combined with other systems.

Maximum allowable torque moments:

- Spindle (ACME) M10xP1,5 60 Nm
- Spindle (ACME) M12xP2,0 120 Nm
- Spindle (ACME) M14xP2,0 150 Nm
- Spindle (ACME) M16xP2,5 250 Nm



38
pcs

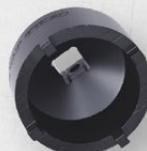
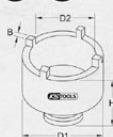
KM Locknut Wrench, external spigot

- For loosening and tightening groove nuts DIN 981 on crimping or clamping sleeves
- Minimum space on nut size
- Slim design
- Suitable for exact torque possible
- Pin + rubber rings for safe holding
- Working range KM4 to KM12 (nuts of ball bearing)

Application range: Removal and installation of bearings, gear wheels, cone roll bearings, ball bearings etc. Trucks, land and construction machines, municipally and forestry technology etc.



1/2" 3/4"



		for nuts	D1 mm	D2 mm	Studs	B mm	H mm
450.5004	1/2"	KM4	37,3	28,5	4	4,0	60,0
450.5005	1/2"	KM5	44,3	34,5	4	5,0	60,0
450.5006	1/2"	KM6	52,3	41,5	4	5,0	60,0
450.5007	1/2"	KM7	59,3	48,5	4	5,0	60,0
450.5008	1/2"	KM8	65,5	53,5	4	6,0	60,0
450.5009	3/4"	KM9	73,5	60,5	4	6,0	68,0
450.5010	3/4"	KM10	78,5	65,5	4	6,0	68,0
450.5011	3/4"	KM11	82,5	70,0	4	7,0	68,0
450.5012	3/4"	KM12	87,5	74,5	4	7,0	68,0

450.5000

PREMIUM-AXLE-DRUCKWERKZEUGE
KS TOOLS
PREMIUM TOOLS

Socket set for KM groove nuts, studs exterior

- For loosening and tightening groove nuts DIN 981 on crimping or clamping sleeves
- Minimum space on nut size
- Slim design
- Suitable for exact torque possible
- Pin + rubber rings for safe holding
- Working range KM4 to KM12 (nuts of ball bearing)

Application range: Removal and installation of bearings, gear wheels, cone roll bearings, ball bearings etc. Trucks, land and construction machines, municipally and forestry technology etc.

1/2" 3/4"



9
pcs



460.1705
KSTOOLS
PREMIUM WERKZEUGE
PREMIUM TOOLS

Slot bushing tool set for silent bearing slot bushes

- Suitable for the installation and removal of the bearing bushes in commercial vehicle spring suspension
- The slotted bushes can be effortlessly preloaded using the clamping block and the accompanying half shells and thus adjusted to the installation dimensions
- Includes 12 l hydraulic cylinder, especially in the construction of fixed bushes
- The hydraulic cylinder is made for universal usage
- Supplied without hydraulic pump
- Optional: Hand pump 640.0010
- Optional: Air Hydraulic Pump 640.0020
- Optional: Electric Hydraulic Pump 640.0030
- Special installation method that protects the bush via parallel working tensioning elements
- The function of the bearing bush is retained
- Simple handling and quick assembly times
- Safe working
- Suitable for bush change directly on the vehicle

Application:

- Ø 51 mm - Volvo FM12
- Ø 60 mm - DB / Renault (430/450/460)
- Ø 68 mm - MAN-TGA (140/414/460)
- front axle spring ROR, SAF



Ø 68 mm MAN-TGA
(410/414/460)



Ø 51 mm
VOLVO(FM12)



Ø 60 mm RENAULT
(430/450/460)


19
pcs


Original CEJN


640.0010
KSTOOLS
PREMIUM WERKZEUGE
PREMIUM TOOLS

Hydraulic hand pump

- Single stage
- Reverse valve for advance and return stroke
- Safety valve for overload protection
- Includes pressure tube 1.8 meters
- Usable tank volume 2081cm³ = 2.081l



	L mm	B mm	H mm	Flow rate per stroke
3/8" - 18 NPT	585	133	119	6,62

640.0020
KSTOOLS
PREMIUM WERKZEUGE
PREMIUM TOOLS

Pneumatic hydraulic pump

- Pneumatic working
- For simply agent press cylinders
- Safety valve for overload protection
- Includes pressure tube 1.8 meters
- Usable tank volume 2081cm³ = 2.081l
- Operating pressure max. 700 bar

Output per stroke:

- 0.8 l/min up to 200 bar
- 0.1 l/min up to 700 bar



	L mm	B mm	H mm
3/8" - 18 NPT	255	130	200

640.0030
KSTOOLS
PREMIUM WERKZEUGE
PREMIUM TOOLS

Electric hydraulic pump

- Two stepped for simply agent press cylinders
- Safety valve for overload protection
- Usable tank volume 1900 cm³ = 1.9l
- Includes pressure tube 1.8 meters

Motor specification 0.37kW - 220/230 V - 50/60 hertz,
single phase (3.2 amps)

1. Stufe: max. 13 bar
2. Stufe: max. 700 bar

Output per stroke:

1. Step: 3,31 l/min
2. Step: 0,32 l/min



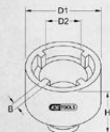
	L mm	B mm	H mm
3/8" - 18 NPT	244	244	362

KM Locknut Wrench, internal spigot

- For loosening and tightening groove nuts DIN 981 on crimping or clamping sleeves
- Minimum space on nut size
- Internal studs for high torque
- Suitable for exact torque possible
- Pin + rubber rings for safe holding
- Working range KM4 to KM12 (nuts of ball bearing)

Application range: Removal and installation of bearings, gear wheels, cone roll bearings, ball bearings etc.
Trucks, land and construction machines, municipally and forestry technology etc.

1/2" 3/4"



 PROFESSIONAL INSTRUMENTS TOOLS & E		for nuts	D1 mm	D2 mm	Studs	B mm	H mm
450.5024	1/2"	KM4	42,0	28,3	4	4,0	60,0
450.5025	1/2"	KM5	50,0	34,3	4	5,0	60,0
450.5026	1/2"	KM6	59,0	41,3	4	5,0	60,0
450.5027	1/2"	KM7	66,0	48,3	4	5,0	60,0
450.5028	1/2"	KM8	73,0	53,5	4	6,0	60,0
450.5029	3/4"	KM9	80,0	60,5	4	6,0	68,0
450.5030	3/4"	KM10	86,0	65,5	4	6,0	68,0
450.5031	3/4"	KM11	93,0	69,5	4	7,0	68,0
450.5032	3/4"	KM12	98,0	74,5	4	7,0	68,0

450.5020

KS TOOLS
PREMIUM TOOLS

Socket set for KM groove nuts, studs internal

- For loosening and tightening groove nuts DIN 981 on crimping or clamping sleeves
- Minimum space on nut size
- Internal studs for high torque
- Use in conjunction with extensions, ratchets etc.
- Suitable for exact torque
- Pin + rubber rings for safe holding
- Working range KM4 to KM12 (nuts of ball bearing)

Application: Removal and installation of bearings, gear wheels, cone roll bearings, ball bearings etc.
Trucks, land and construction machines, municipally and forestry technology etc.

1/2" 3/4"



9
pcs

460.1025

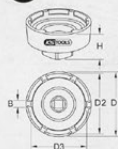
KS TOOLS
PREMIUM TOOLS

Slotted nut wrench with 4 pins for DAF

- Internal square drive to DIN 3121 / ISO 1174
- High accuracy of fit
- Special profile with 4 internal studs
- Extremely robust version
- Suitable for high tightening and loosening torque
- Special tool steel

Application range: DAF XLR (Euro 4)
centre drive shaft bearing

3/4"



D1 mm	D2 mm	D3 mm	Studs	B mm	H mm
72,0	57,0	50,0	4	60,0	55,0



455.0100

KS TOOLS
PREMIUM TOOLS

Special socket for 8 point screws

- Special 8 point internal profile
- To the dismantling and assembly of the control switch for the differential lock
- Ideally suited also for various electric switches on the transmissions
- Mirror polished
- Special tool steel

Application range: MAN, Mercedes LKW Actros, SK Baureihe etc.

1/2"



Profile	mm	Ø mm	L mm
8 point	27	34	57

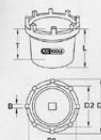
460.3815

KS TOOLS
PREMIUM TOOLS

Wrench with 6 pins for Mercedes

- Removal and installation of differential nuts
- External drive hexagonal socket 32.0 mm
- High accuracy of fit
- Extremely robust version
- Suitable for high tightening and loosening torque
- Special tool steel

Application range: Mercedes Citaro and
Evo-Bus (ZF axle)



D1 mm	D2 mm	D3 mm	T mm	L mm	Studs	B mm
84	58	72	9	60,5	6	10,7



460.4155
KSTOOLS
 PREMIUM-WERKZEUGE
 PREMIUM TOOLS

10
 pcs

**Differential main shaft bearings
 puller set for DAF**

- For damage-free mounting and dismounting of the differential's main shaft bearings
- Extremely sturdy execution
- Including 2 half-shell pairs
- Trapezoid thread spindle for high removal power - drive 30 mm
- Special tool steel

Application range: DAF (CF) 35 t


460.3685
KSTOOLS
 PREMIUM-WERKZEUGE
 PREMIUM TOOLS

10
 pcs

**Differential main shaft bearings
 puller set for DAF**

- For damage-free mounting and dismounting of the differential's main shaft bearings
- Extremely sturdy execution
- Including 2 half-shell pairs
- Trapezoid thread spindle for high removal power - drive 30 mm
- Special tool steel

Application range: DAF (CF) 35 t


460.3690
KSTOOLS
 PREMIUM-WERKZEUGE
 PREMIUM TOOLS

14
 pcs

**Differential main shaft bearings
 puller set for DAF and Scania**

- For damage-free removal of the main shaft bearings of the differential
- Extremely sturdy execution
- Including 4 half-shell pairs
- Trapezoid thread spindle for high removal power - drive 30 mm
- Special tool steel

 Application range:
 DAF (CF) 35 t

460.0620
KSTOOLS
 PREMIUM-WERKZEUGE
 PREMIUM TOOLS

12
 pcs

**Differential tapered roller bearing
 puller for MAN**

- Designed for the damage-free removal of the cone roll bearings at the differential
- Extremely sturdy execution
- Includes 2 half shell pairs Ø 115 and Ø 137 mm
- Trapezoid thread spindle for high removal power - drive 30 mm
- Special tool steel

Application range: MAN differential roll bearing


460.3905
KSTOOLS
 PREMIUM-WERKZEUGE
 PREMIUM TOOLS

7
 pcs

**Differential main shaft bearings
 puller set for Scania**

- For damage-free removal of the main shaft bearings of the differential
- Extremely sturdy execution
- Including 2 half-shell pairs
- Trapezoid thread spindle for high removal power - drive 30 mm
- Special tool steel

Application range: Scania (113/114) and MAN (410/414)



460.3910

KS TOOLS
PREMIUM TOOLS

8
pcs

Differential main shaft bearings puller set for Volvo

- For damage-free removal of the main shaft bearings of the differential
- Extremely sturdy execution
- Including 2 half-shell pairs
- Trapezoid thread spindle for high removal power - drive 30 mm
- Special tool steel

Application range: Volvo (FM12)



460.4360

KS TOOLS
PREMIUM TOOLS

12
pcs

Differential main shaft bearings puller set for Volvo

- For damage-free removal of the main shaft bearings of the differential
- Extremely sturdy execution
- Including 3 half-shell pairs
- Trapezoid thread spindle for high removal power - drive 30 mm
- Special tool steel

Application range:
Volvo FM12 (EV90/EV91)



460.1050

KS TOOLS
PREMIUM TOOLS

2
pcs

Lifting cylinder tool set

- for mounting and dismounting the oil seal on the hydraulic lifting cylinder
- Internal square drive to DIN 3121 / ISO 1174
- Extremely sturdy execution
- For machinery usage
- Special tool steel

Application range: Volvo FM12 >2005
Lifting cylinder tandem axle lifter

3/4"



460.5475

KS TOOLS
PREMIUM TOOLS

Shaft seal assembly mandrel for Mercedes

- ideally suited for damage-free installation of the shaft sealing rings
- To be used with a rubber hammer
- Seal seats are spared
- Special tool steel



Ø 1 mm	Ø 2 mm	Ø 3 mm	Ø 4 mm	H mm
208	171,5	163,5	142	182

460.5476

KS TOOLS
PREMIUM TOOLS

Shaft seal assembly mandrel for Mercedes

- ideally suited for damage-free assembly of the cassette shaft seals
- To be used with a rubber hammer
- Seal seats are spared
- Special tool steel

Application range:
Mercedes Actros VA 739.5 - HA 749.108/30



Ø 1 mm	Ø 2 mm	Ø 3 mm	Ø 4 mm	H mm
165	152,5	142	132	158

460.5477



Shaft seal assembly mandrel for Mercedes

- Ideally suited for damage-free installation of the shaft sealing rings
- To be used with a rubber hammer
- Seal seats are spared
- Special tool steel

Application range: Mercedes Actros AP rear axles



Ø 1 mm	Ø 2 mm	H mm
176	142	164

460.1105



Hub cap socket for SAF

- Internal square drive to DIN 3121 / ISO 1174
- For mounting and dismounting of grease caps on SAF axles
- 8-point
- Extremely versatile
- Suitable for exact torque on a hexagon head possible
- Suitable for high tightening and loosening torque
- For machinery usage
- Special tool steel



Ø mm	Ø mm	H mm
130,0	155,0	77,0

460.5478



Pole wheel mounting mandrel for Mercedes

- Ideally suited for damage-free installation of the pole wheels
- To be used with a rubber hammer
- Seal seats are spared
- Special tool steel

Application range: Mercedes Actros VA with brake discs and ABS, lift axles as well as identical axles of supports



Ø 1 mm	Ø 2 mm	H mm
186	159	162

460.4790



Axle nut wrench for SAF

- With hexagon drive 32.0 mm
- 6 point
- Very high degree of accuracy
- Extremely robust version
- Suitable for high tightening and loosening torque
- Special tool steel

Application range: SAF trailer axle



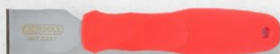
Ø mm	Ø mm	Ø mm	H mm
85,0	32	140,0	102,0

907.2237



Carbide scraper

- Ideal for removing stubborn impurities, sealant residues and surface treatment
- For burnt on pads on the exhaust, brakes etc.
- With a very hard-wearing carbide cutting element
- A solid blade with two scraping edges
- Extremely long service life
- Works as a compression and a pulling blade
- With an ergonomic, moulded, one component handle
- With reinforcement eyelet



450.0201



Axle nut wrench for SAF

- Six sided drive 36 mm
- Positive drive of the axle nut
- Any extensive slipping is avoided
- Milled out profile
- Sturdy design
- Can be used with an impact wrench or torque wrench
- Special tool steel

Application range: SAF axle trailers



Ø mm	Ø mm	Ø mm	H mm
85,0	36	118,0	82,0



450.0110

KSTOOLS
PREMIUM TOOLS

Axle nut wrench for SAF

- Positive drive of the axle nut
- Sturdy design
- Can be used with an impact wrench or torque wrench
- Ideally suited for brake restoration working
- Forward tension with SW 32 mm is at 150 Nm
- Angle of rotation 20-30° with SW 46
- Special tool steel

Application range: SAF Euro axle etc.



Ø mm	H mm	H mm
140,0	32	100,0

460.4785

KSTOOLS
PREMIUM TOOLS

Mounting arbor for SAF wheel bearings

- for the professional assembly of wheel bearings
- Sturdy design
- Special tool steel

Application range: SAF wheel hubs



Ø1 mm	Ø2 mm	Ø3 mm	Ø4 mm
185,0	174,0	165,0	158,0

460.4705

KSTOOLS
PREMIUM TOOLS

2
pcs

Wheel hub puller set for SAF

- For 140 mm hole diameters
- Sturdy design
- Threaded spindle for high pull-off force - 32 mm drive
- Special tool steel



460.4815

KSTOOLS
PREMIUM TOOLS

Thrust piece for wheel hub for SAF

- Thrust piece for removing wheel hubs
- can be used with pullers 440.0590, 440.0610 and 450.1765
- Sturdy design
- Special tool steel

Application range: SAF wheel hubs



Outer - Ø mm	Inner - Ø mm
88,0	82,0

460.4845

KSTOOLS
PREMIUM TOOLS

Wheel bearing mounting sleeve for SAF

- ideally suited for mounting and dismounting the compact wheel bearing with wheel hub on SAF axles
- with right and left-hand thread
- Sturdy design
- Special tool steel



for threads	Ø mm	L mm
M75 x 1,5	82,0	150,0

460.4875

KSTOOLS
PREMIUM TOOLS

9
pcs

HD bushing tool set for SAF

- ideally suited for disassembly and assembly of the HD bushings on SAF axles
- Sturdy design
- Threaded spindle for high pull-off force - 30.0 mm drive
- Special tool steel



460.4795

KSTOOLS
PREMIUM TOOLS

Wheel bearing mounting sleeve for SAF

- ideally suited for mounting and dismounting the compact wheel bearing with wheel hub on SAF axles
- with right and left-hand thread
- Sturdy design
- Special tool steel



for threads	Ø mm	L mm
M75 x 1,5	88,0	150,0

460.4885



12
pcs

3D bushing tool set for SAF axles, Mercedes DCA and HT axles

- Ideally suited for disassembly and assembly of 3D bushings on SAF and Mercedes axles
- Sturdy design
- Trapezoid thread spindle for high removal power - drive 30 mm
- Special tool steel

Application range: SAF and Mercedes axles



460.4900



Arching wheel mounting tool for SAF

- Ideally suited for mounting pole wheels on SAF axles
- Sturdy design
- Special tool steel

Application range:
SAF axles S-, Z-Series



460.4670



Assembly mandrel for bearing ring and exciter ring for SAF

- Ideally suited for mounting bearing rings and pole wheels on SAF axles
- Sturdy design
- Special tool steel

Application range: SAF axles SK RB 9022 Ki(01),
SK RB 9019Ki, SK RB 9019 WL, SK RB 9022WL,
B(1)9-19K, B(1)9-19W, B(1)9-19K01,
B(1)9-22W (6), BA9-22K01



Ø 1 mm	Ø 2 mm	Ø 3 mm	H mm
159,0	138,0	80,0	104,0

460.4695



2
pcs

Drive-in mandrel for cassette sealing ring on SAF axles

- Ideally suited for mounting cassette sealing rings on SAF axles
- Sturdy design
- Special tool steel

Application range: SAF axles



460.4720



36
pcs

Brake caliper repair kit

- for the professional repair of callipers
- for the replacement of bellows, calliper bearings and the internal sealing of the bellow
- Secure and easy to use
- High accuracy of fit
- Enormous time and cost saving
- Special tool steel
- In durable plastic storage case

Application range: Knorr
(SB, SN and SK), Wabco (PAN 19-1
and PAN 22-1), Haldex Modul T
(SAF, SB52220 H0)

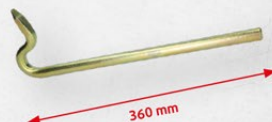


460.4850



Double lever for snap ring rims

- ideally suited for dismantling snap ring rims
- Special shape
- Special tool steel



460.4855



Opening lever for three-piece rims

- ideally suited for the assembly and disassembly of three-piece rims
- Special shape
- Special tool steel



460.4835

KSTOOLS
PREMIUM TOOLS

Brake shoe clamping device for SAF

- suitable for mounting and dismantling brake shoes
- Sturdy design
- Special tool steel

Application range: SAF SK500, SK500 Plus, SK9042/11242 and SK9037/11037



6

pcs

460.4700

KSTOOLS
PREMIUM TOOLS

Clamping fixture set for drum lathe Ø 50 mm

- suitable for use with brake drum lathe
- Sturdy design
- Special tool steel

Application range: SAF (SK500, SK500 Plus, SK9042/11242 and SK9037/11037)



Ø 205 mm

Ø 142 mm

2

pcs

460.4710

KSTOOLS
PREMIUM TOOLS

3.1/2" limit gauge for checking the wear limit of the kingpin

- to check the wear limit of the kingpin
- relevant for the safety check
- Sturdy design

Application range: kingpin



460.4925

KSTOOLS
PREMIUM TOOLS

Lock tester 2" for checking the wear limit of the fifth wheel coupling

- Relevant for the backup check
- Sturdy design
- Special tool steel



Application range: fifth-wheel coupling

440.0385

KSTOOLS
PREMIUM TOOLS

Bushing set for SAF

- for mounting and dismantling the 3D bearing (150mm) on SAF axles
- extremely robust 500mm tie rods with inductively hardened thread
- Enables use directly on the vehicle
- ideal for use with 32t hydraulic cylinder (440.0025)
- Simple handling
- Special tool steel

Recommended hydraulic cylinder: 32t (440.0025)

Application range: SAF axle



6

pcs

Wheel cap impact wrench for BPW

- For the assembly and dismantling of grease caps on BPW axles
- 8-point
- Extremely versatile
- With impact area
- For heavy duty applications
- For manual use
- Special tool steel



	mm	L mm
460.4685	95,0	233,0
460.4690	110,0	240,0

Wheel cap impact wrench for BPW

- For the assembly and dismantling of grease caps on BPW axles
- Flat oval form
- Extremely versatile
- With impact area
- For heavy duty applications
- For manual use
- Special tool steel

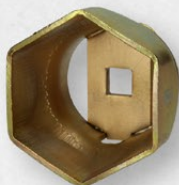


	mm	L mm
460.4675	95,0	233,0
460.4680	110,0	240,0

Axle nut wrench for BPW

- Internal square
- 6 point
- High accuracy of fit
- Extremely robust version
- Suitable for high tightening and loosening torque
- Special tool steel

3/4"



KSTOOLS PREMIUM WERKZEUGE	Ø mm	L mm
460.4933	46	155,0
460.4936	70	80,0
460.4938	85	300,0
460.4939	95	85,0
460.4940	100	80,0

450.0215



Axle nut wrench for BPW

- Internal square drive to DIN 3121 / ISO 1174
- 6 point
- High accuracy of fit
- Extremely robust version
- Suitable for high tightening and loosening torque
- For machinery usage
- Special tool steel

Application range: BPW axle nuts (crown nuts)
16 tonne axles

3/4"



Ø mm	D mm	T mm	H mm
85,0	3/4"	110,0	33,0

Axle nut wrench for BPW

- Internal square drive to DIN 3121 / ISO 1174
- Extremely versatile
- Flat oval form
- High accuracy of fit
- Extremely robust version
- Suitable for high tightening and loosening torque
- Special tool steel

3/4"



KSTOOLS PREMIUM WERKZEUGE	Ø mm		Ø mm	H mm
450.0204	65,0	3/4"	82,0	66,0
450.0205	80,0	3/4"	100,0	80,0

460.4943



Axle nut wrench for BPW

- Internal square drive to DIN 3121 / ISO 1174
- 6 point
- High accuracy of fit
- Extremely robust version
- Suitable for high tightening and loosening torque
- For machinery usage
- Special tool steel

Application range: BPW axles

1/2"



Ø mm	Ø mm	H mm
46,0	64,0	64,0

460.4150



Axle nut wrench for BPW

- Internal square drive to DIN 3121 / ISO 1174
- Extremely versatile
- Flat oval form
- High accuracy of fit
- Extremely robust version
- Suitable for high tightening and loosening torque
- Special tool steel

3/4"



Ø mm	Ø mm	H mm
85,0	117,0	70,0

Axle nut wrench for BPW

- Internal square drive to DIN 3121 / ISO 1174
- Flat oval form
- High accuracy of fit
- Extremely robust version
- Suitable for high tightening and loosening torque
- For machinery usage
- Special tool steel

1/2"



KSTOOLS PREMIUM WERKZEUGE	Ø mm	Ø mm	H mm
460.4944	65,0	82,0	78,0
460.4945	80,0	100,0	78,0

460.4946

KS TOOLS
PREMIUM TOOLS

Hub cap socket for BPW

- For mounting and dismounting BPW hubcaps
- Internal square drive to DIN 3121 / ISO 1174
- 8-point
- High accuracy of fit
- Extremely robust version
- Suitable for high tightening and loosening torque
- For machinery usage
- Special tool steel

1"



mm	Ø mm	H mm
95,0	115,0	91,0

450.0207

KS TOOLS
PREMIUM TOOLS

Hub cap socket for BPW

- For the assembly and dismantling of grease caps on BPW axles
- Extremely versatile
- Flat oval form
- Suitable for exact torque on a hexagon head possible
- Suitable for high tightening and loosening torque
- For machinery usage
- Special tool steel



mm	Ø mm	mm	H mm
41	110,0	95,0	90,0



460.1325

KS TOOLS
PREMIUM TOOLS

Hub cap socket for BPW

- Internal square drive to DIN 3121 / ISO 1174
- For the assembly and dismantling of grease caps on BPW axles
- 8-point
- Extremely versatile
- Suitable for exact torque on a hexagon head possible
- Suitable for high tightening and loosening torque
- For machinery usage
- Special tool steel

3/4"



mm	Ø mm	H mm
110,0	132,0	80,0



450.0208

KS TOOLS
PREMIUM TOOLS

Hub cap socket for BPW

- For the assembly and dismantling of grease caps on BPW axles
- Extremely versatile
- Flat oval form
- Suitable for exact torque on a hexagon head possible
- Suitable for high tightening and loosening torque
- For machinery usage
- Special tool steel



mm	mm	Ø mm	H mm
111,0	41	132,0	90,0



460.0415

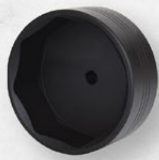
KS TOOLS
PREMIUM TOOLS

Hub cap socket for BPW

- For the assembly and dismantling of grease caps on BPW axles
- 8-point
- Extremely versatile
- Suitable for exact torque on a hexagon head possible
- Suitable for high tightening and loosening torque
- For machinery usage
- Special tool steel



mm	mm	Ø mm	H mm
111,0	41	130,0	95,0



460.0420

KS TOOLS
PREMIUM TOOLS

Axle nut wrench for BPW

- Internal square drive to DIN 3121 / ISO 1174
- Flat oval form
- High accuracy of fit
- Extremely robust version
- Suitable for high tightening and loosening torque
- Special tool steel

Application range: BPW axles 12 t

1"



mm	Ø mm	H mm
111,0	132,0	80,0



460.0410

Axle nut wrench for BPW

- With six sided drive 41 mm
- 8-point
- High accuracy of fit
- Extremely robust version
- Suitable for high tightening and loosening torque
- For machinery usage
- Special tool steel

Application range: BPW axles 16 t



Ø mm	Ø mm	H mm
120,0	142,0	95,0

460.1830

Wheel cap socket wrench for BPW

- for mounting and dismounting BPW hubcaps
- internal square drive to DIN 3121 / ISO 1174
- Flat oval form
- High accuracy of fit
- Extremely robust version
- Suitable for high tightening and loosening torque
- For machinery usage
- Special tool steel

Application range: BPW axles ECO / ECO Plus 2



1"



Ø mm	Ø mm	H mm
120,0	143,0	78,0

Universal wheel hub puller

- Extracting the wheel hubs and/or housing over the grease cap thread
- Six sided drive enable unscrewing on the cap
- Sturdy design
- Special tool steel



	Size outside thread	Application for
460.4810	M84 x 2 mm	610.1901
460.4800	M115 x 3 mm	450.0077

Tapered roller bearing press-in tool for BPW

- Bearing installation aid
- For damage free mounting
- Extremely versatile
- Special tool steel

Application range: Tapered roller bearing outer rings



	Ø mm
460.4952	100,0
460.4956	113,0
460.4955	123,0
460.4957	123,0
460.4954	142,0
460.4951	157,0
460.4953	160,0

Raceway press-in tool for BPW

- Raceway installation aid
- For damage free mounting
- Extremely versatile
- Special tool steel

Application range: Hub sealing rings



	Ø mm	H mm	suitable for
460.4958	139,0	48,0	02.5683.62.00
460.4959	159,0	48,0	02.5683.63.00
460.4960	159,0	38,0	02.5683.80.00

460.4870

Taper roller bearing extractor for BPW

- ideally suited for the removal of fixed tapered roller bearings with thrust ring
- Sturdy design
- Threaded spindle for high pull-off force
- Special tool steel

Application range: BPW axles 10-14 t


460.4755

Pole wheel mounting tool for BPW

- ideally suited for mounting pole wheels on BPW axles
- Sturdy design
- Special tool steel

Application range: BPW EcoPlus 8 - 9 t axles



460.4961

KS TOOLS
PREMIUM TOOLS

Installation tool for exciter ring on BPW axles

- Ideally suited for mounting pole wheels on BPW axles
- Sturdy design
- Special tool steel

Application range:
BPW EcoPlus 3 axles



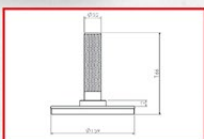
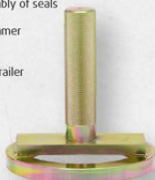
460.1010

KS TOOLS
PREMIUM TOOLS

BPW seal assembly pin

- Ideal for the protective assembly of seals
- Suitable for manual operation
- To be used with a rubber hammer
- Special tool steel

Application range: BPW 12 t trailer



Ø mm	L mm
159,0	166,0

460.4980

KS TOOLS
PREMIUM TOOLS

Lever for brake return spring mounting for BPW

- Ideally suited for the disassembly and assembly of brake springs on drum brakes
- Used for cylindrical and conical retaining clips
- Special tool steel

Application range: BPW (SN300, SN360 and SN420)



460.4770

KS TOOLS
PREMIUM TOOLS

Pulling device for brake pins on the drum brake

- Ideally suited for the dismantling of brake pins on the drum brakes
- Incl. threaded insert M 20 x 1.5 mm / M 20 x 1.5 mm
- Sturdy design
- Special tool steel



460.4830

KS TOOLS
PREMIUM TOOLS

Driving pin for bearing bushes on brake pins / shafts

- Ideally suited for mounting of bearing bushes on brake pins / shafts
- Two driving mandrels included in delivery
- For use with the hammer
- Sturdy design
- Special tool steel



3
pcs

460.4860

KS TOOLS
PREMIUM TOOLS

Assembly tool set for brass bushing locating bearing

- Ideally suited for disassembly and assembly of brass bushes Fixed bearing on disc brakes
- Sturdy design
- Special tool steel

Application range: BPW disc brakes



5
pcs

460.4905

KS TOOLS
PREMIUM TOOLS

Pull-out and pull-in tool for floating bearings and guide sleeves BPW

- For professional brake repair
- For pulling out and in of the guide sleeves of the floating bearings
- Secure and easy to use
- Very high degree of accuracy
- Enormous time and cost saving
- Special tool steel

Application range: BPW SH and SKH



7
pcs

460.4760

KS TOOLS
PREMIUM TOOLS

Steel-rubber bushes Dismantling assembly tool for BPW

- Assembly and disassembly of bushings
- Ideally suited for steel-rubber bushings on shackle stabilisers
- Enables de- and assembly directly on the vehicle
- Easy to use
- Saves a lot of time
- Special tool steel



6
pcs

Steel-rubber bushes Assembly tool for BPW

- universally applicable for the removal and installation of steel-rubber bushings
- excellent for use in combination with a workshop press
- Easy to use
- Saves a lot of time
- for light and heavy trucks
- Special tool steel

Application range: BPW ECO Plus 2



460.4990	24,0
460.4991	30,0

Screw-in head for BPW

- ideally suited for aligning axes and assemblies in conjunction with measuring tubes 460.4995 and 460.4996
- also suitable as extraction device for hubs in connection with the forcing-off screw 460.4997
- Sturdy design
- Special tool steel

Application range: BPW axes



460.4992	M125 x 2
460.4993	M135 x 2
460.4994	M136 x 2,5

460.4995



Measuring tube for BPW

- ideally suited for aligning axes and assemblies in conjunction with the screw-in heads 460.4992, 460.4993 and 460.4994
- Sturdy design
- Special tool steel

Application range: BPW axes



460.4996



Measuring tube extension for BPW

- ideally suited for aligning axes and assemblies in conjunction with the screw-in heads 460.4992, 460.4993 and 460.4994
- Sturdy design
- Special tool steel

Application range: BPW axes



460.4997



Jacking bolt for BPW

- ideally suited as extraction device for hubs in connection with the screw-in heads 460.4992, 460.4993 and 460.4994
- Sturdy design
- Special tool steel

Application range: BPW axes



150.1810



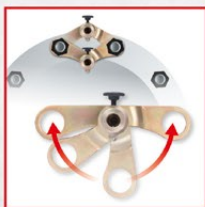
Alignment tool set for light and heavy commercial vehicle

- Universal application, independently of hole spacing and number of bolts
- For repair work on steering and suspension components
- Restoring of the original wheel adjustment parameters such as toe-in and track width after a repair
- When replacing suspension parts, e.g.: Track rod end (ball joint)
- Independent of mains power supply and measuring location
- In durable plastic storage case

Application range: Use of transporters, trucks, buses, trailers and semi-trailers



21 pcs



Om Rydahls

Under våra drygt hundra år i branschen har vi byggt upp en unik erfarenhet och kompetens. Vi är specialister på såväl enskilda produkter som skräddarsydda bromssystem och friktionslösningar och erbjuder ett mycket omfattande sortiment av reservdelar, produkter och material.

Våra kunder är i huvudsak verksamma inom verkstad, maskin- och fordonsindustri och tillverkande industri. Med fullt fokus på kundens behov levererar vi innovativa lösningar, kvalitet i världsklass och service i kvadrat.

Testa oss! Vi vill mer, helt enkelt!

Huvudkontor & centrallager

Brisgatan 19, Box 12, 651 02 Karlstad

Tel 010-550 94 00

info@rydahls.se

www.rydahls.com

Kundtjänst

E-post: servicegruppen@rydahls.se

Tel: 0771-27 66 72

Våra Servicelager

Gävle

Utmarksvägen 15

802 91 Gävle

Tel 026-671 02 36

Stockholm

Avestagatan 61

163 53 Spånga

Tel 08-502 540 40

Göteborg

Backa Bergögata 13

422 46 Hisings backa

Tel 031-742 98 48

Västerås

Omformargatan 8

721 37 Västerås

Tel 021-80 07 60

Linköping

Vigfastgatan 3

582 78 Linköping

Tel 013-474 41 30

Örebro

Pikullagatan 1

702 27 Örebro

Tel 019-277 68 00

Luleå

Maskinvägen 3

972 54 Luleå

Tel 0920-27 17 30

Örnsköldsvik

Hästmarksvägen 3

891 38 Örnsköldsvik

Tel 0660-24 05 50

